

# GSTM1 antibody



Catalog Number: 111185

## Product name

GSTM1 antibody

## Specificity

Human, Mouse; other species not tested.

## Antibody description

GSTM1 Rabbit Polyclonal antibody. Positive WB detected in mouse ovary tissue, HeLa cells, mouse kidney tissue, mouse liver tissue. Positive IHC detected in human gliomas tissue. Observed molecular weight by Western-blot: 27 kDa

## Preparation

This antibody was obtained by immunization of GSTM1 recombinant protein (Accession Number: NM\_146421). Purification method: Antigen affinity purified.

## Formulation

PBS with 0.1% sodium azide and 50% glycerol pH 7.3.

## Storage

Store at -20°C. DO NOT ALIQUOT

## Clonality

Polyclonal

## Ig Type

Rabbit IgG

## Applications

ELISA, WB, IHC

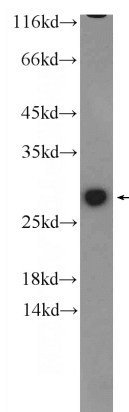
## Dilutions

Recommended Dilution:

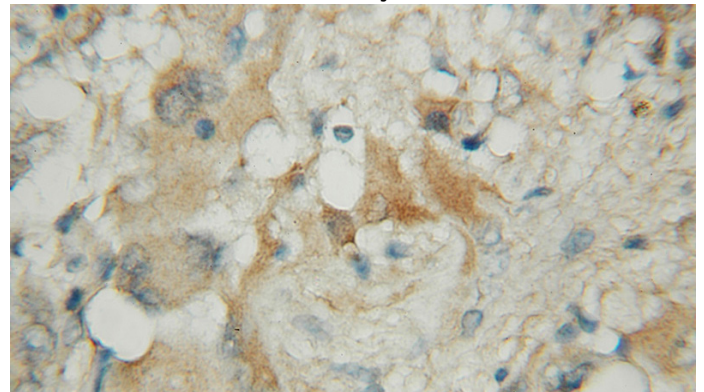
WB: 1:200-1:2000

IHC: 1:20-1:200

## Validations



mouse ovary tissue were subjected to SDS PAGE followed by western blot with Catalog No:111185(GSTM1 antibody) at dilution of 1:500



Immunohistochemical of paraffin-embedded human gliomas using Catalog No:111185(GSTM1 antibody) at dilution of 1:50 (under 10x lens)