

# GSTCD antibody

Catalog Number: 111183

## Product name

GSTCD antibody

IHC: 1:20-1:200

IF: 1:20-1:200

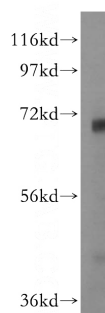
## Specificity

Human, Mouse, Rat; other species not tested.

## Validations

## Antibody description

GSTCD Rabbit Polyclonal antibody. Positive WB detected in mouse liver tissue, A431 cells, L02 cells, mouse kidney tissue. Positive IHC detected in human liver tissue. Positive IF detected in A549 cells. Observed molecular weight by Western-blot: 71 kDa



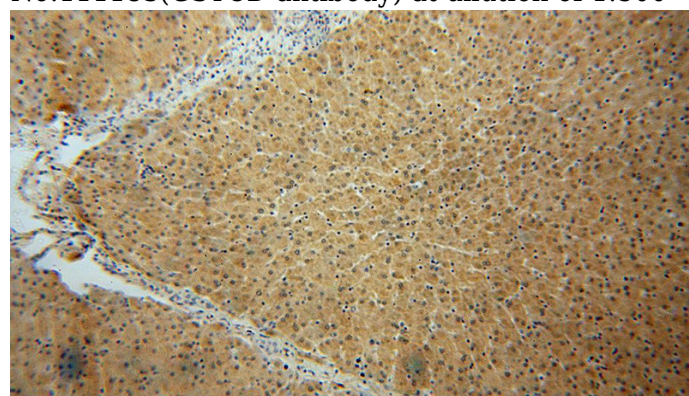
## Preparation

This antibody was obtained by immunization of GSTCD recombinant protein (Accession Number: XM\_011532252). Purification method: Antigen affinity purified.

mouse liver tissue were subjected to SDS PAGE followed by western blot with Catalog No:111183(GSTCD antibody) at dilution of 1:500

## Formulation

PBS with 0.02% sodium azide and 50% glycerol pH 7.3.



## Storage

Store at -20°C. DO NOT ALIQUOT

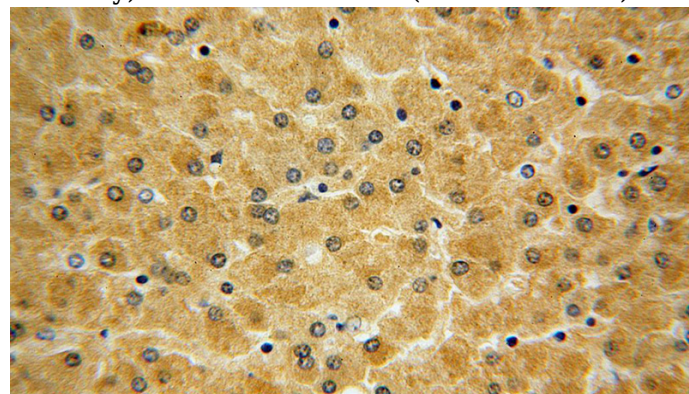
## Clonality

Polyclonal

Immunohistochemical of paraffin-embedded human liver using Catalog No:111183(GSTCD antibody) at dilution of 1:100 (under 10x lens)

## Ig Type

Rabbit IgG



## Applications

ELISA, WB, IHC, IF

## Dilutions

Recommended Dilution:

WB: 1:500-1:5000

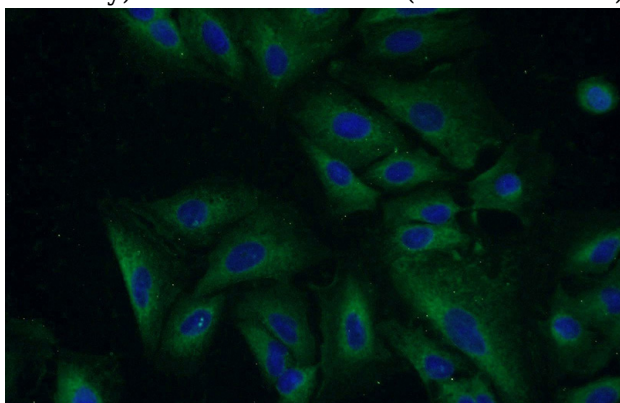
Immunohistochemical of paraffin-embedded human liver using Catalog No:111183(GSTCD

# GSTCD antibody

Catalog Number: 111183

---

antibody) at dilution of 1:100 (under 40x lens)



Immunofluorescent analysis of A549 cells using Catalog No:111183(GSTCD Antibody) at dilution of 1:50 and Alexa Fluor 488-conjugated AffiniPure Goat Anti-Rabbit IgG(H+L)