

# GSR antibody

Catalog Number: 111177

## Product name

GSR antibody

IP: 1:200-1:2000

IF: 1:10-1:100

## Specificity

Human, Mouse, Rat; other species not tested.

## Antibody description

GSR Rabbit Polyclonal antibody. Positive WB detected in Jurkat cells, HeLa cells, human placenta tissue, mouse lung tissue. Positive IP detected in HeLa cells. Positive IF detected in MCF-7 cells. Observed molecular weight by Western-blot: 52-55 kDa

## Preparation

This antibody was obtained by immunization of GSR recombinant protein (Accession Number: NM\_000637). Purification method: Antigen affinity purified.

## Formulation

PBS with 0.02% sodium azide and 50% glycerol pH 7.3.

## Storage

Store at -20°C. DO NOT ALIQUOT

## Clonality

Polyclonal

## Ig Type

Rabbit IgG

## Applications

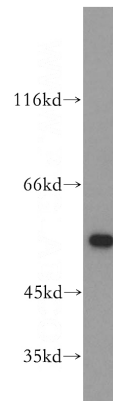
ELISA, WB, IF, IP

## Dilutions

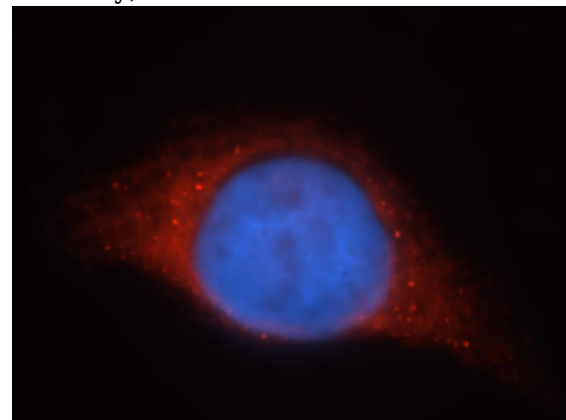
Recommended Dilution:

WB: 1:500-1:5000

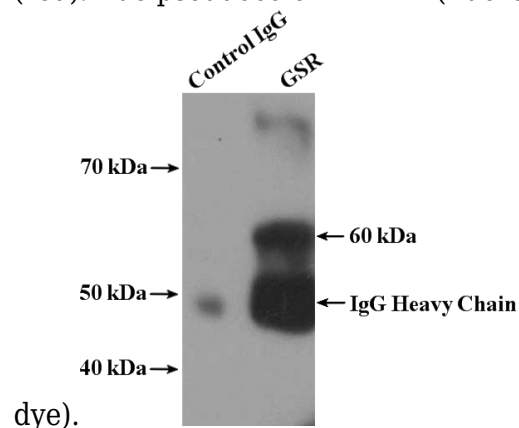
## Validations



Jurkat cells were subjected to SDS PAGE followed by western blot with Catalog No:111177(GSR antibody) at dilution of 1:500



Immunofluorescent analysis of MCF-7 cells, using GSR antibody Catalog No:111177 at 1:25 dilution and Rhodamine-labeled goat anti-rabbit IgG (red). Blue pseudocolor = DAPI (fluorescent DNA



# GSR antibody



Catalog Number: 111177

---

IP Result of anti-GSR (IP:Catalog No:111177, 4ug; Detection:Catalog No:111177 1:500) with HeLa cells lysate 2600ug.