

GRWD1 antibody



Catalog Number: 111163

Product name

GRWD1 antibody

Specificity

Human, Mouse, Rat; other species not tested.

Antibody description

GRWD1 Rabbit Polyclonal antibody. Positive IHC detected in human prostate cancer tissue. Positive WB detected in HEK-293 cells, PC-3 cells, SKOV-3 cells. Observed molecular weight by Western-blot: 49kd

Preparation

This antibody was obtained by immunization of GRWD1 recombinant protein (Accession Number: NM_031485). Purification method: Antigen affinity purified.

Formulation

PBS with 0.1% sodium azide and 50% glycerol pH 7.3.

Storage

Store at -20°C. DO NOT ALIQUOT

Clonality

Polyclonal

Ig Type

Rabbit IgG

Applications

ELISA, IHC, WB

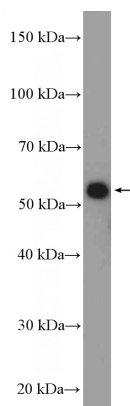
Dilutions

Recommended Dilution:

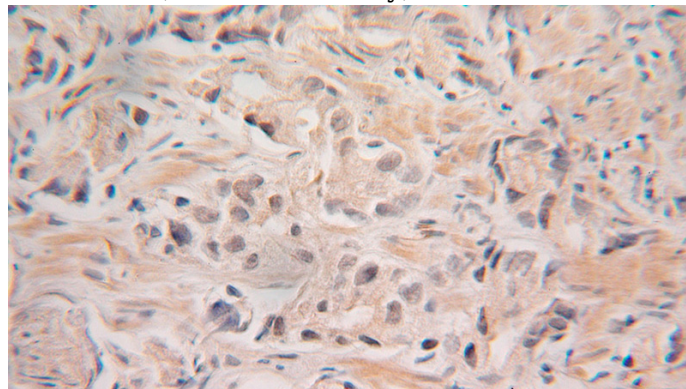
WB: 1:200-1:2000

IHC: 1:20-1:200

Validations



HEK-293 cells were subjected to SDS PAGE followed by western blot with Catalog No:111163(GRWD1 Antibody) at dilution of 1:600



Immunohistochemical of paraffin-embedded human prostate cancer using Catalog No:111163(GRWD1 antibody) at dilution of 1:100 (under 25x lens)