

Granulin antibody

Catalog Number: 111158

Product name

Granulin antibody

WB: 1:200-1:2000

IHC: 1:20-1:200

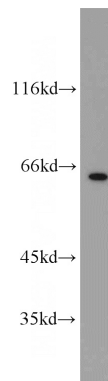
Specificity

Human; other species not tested.

Validations

Antibody description

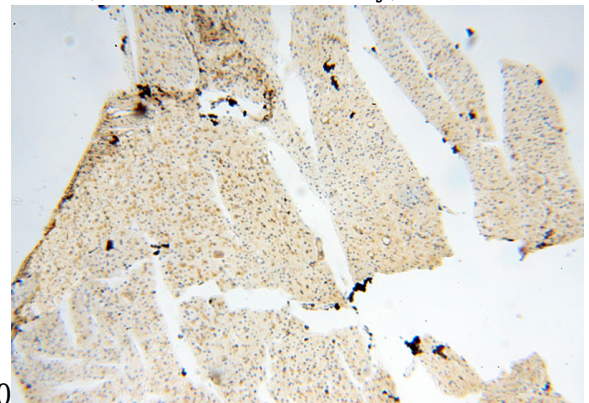
Granulin Rabbit Polyclonal antibody. Positive IHC detected in human heart tissue, human kidney tissue, human placenta tissue, human skin tissue, human spleen tissue, human testis tissue. Positive WB detected in A431 cells, HEK-293 cells, MCF7 cells. Observed molecular weight by Western-blot: 64 kDa



Preparation

This antibody was obtained by immunization of Granulin recombinant protein (Accession Number: XM_005257253). Purification method: Antigen affinity purified.

A431 cells were subjected to SDS PAGE followed by western blot with Catalog No:111158(PCDGF,GRN antibody) at dilution of



Formulation

PBS with 0.1% sodium azide and 50% glycerol pH 7.3.

1:500

Storage

Store at -20°C. DO NOT ALIQUOT

Immunohistochemical of paraffin-embedded human heart using Catalog No:111158(PCDGF,GRN antibody) at dilution of 1:50 (under 10x lens)

Clonality

Polyclonal

Ig Type

Rabbit IgG

Applications

ELISA, WB, IHC

Dilutions

Recommended Dilution:

Immunohistochemical of paraffin-embedded

Granulin antibody



Catalog Number: 111158

human heart using Catalog

No:111158(PCDGF,GRN antibody) at dilution of
1:50 (under 40x lens)