

# GRAF antibody

Catalog Number: 111154

## Product name

GRAF antibody

IP: 1:500-1:5000

IHC: 1:20-1:200

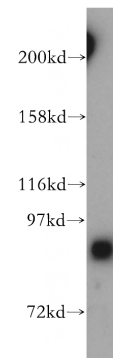
## Specificity

Human, Mouse; other species not tested.

## Validations

## Antibody description

GRAF Rabbit Polyclonal antibody. Positive IP detected in HepG2 cells. Positive WB detected in HeLa cells, HepG2 cells, human brain tissue, mouse thymus tissue. Positive IHC detected in human liver tissue, human heart tissue. Observed molecular weight by Western-blot: 92 kDa



## Preparation

This antibody was obtained by immunization of GRAF recombinant protein (Accession Number: NM\_001135608). Purification method: Antigen affinity purified.

HeLa cells were subjected to SDS PAGE followed by western blot with Catalog No:111154(ARHGAP26 antibody) at dilution of

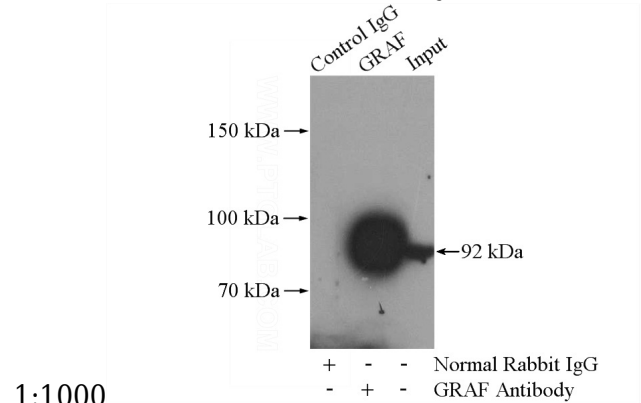
## Formulation

PBS with 0.02% sodium azide and 50% glycerol pH 7.3.

1:1000

## Storage

Store at -20°C. DO NOT ALIQUOT



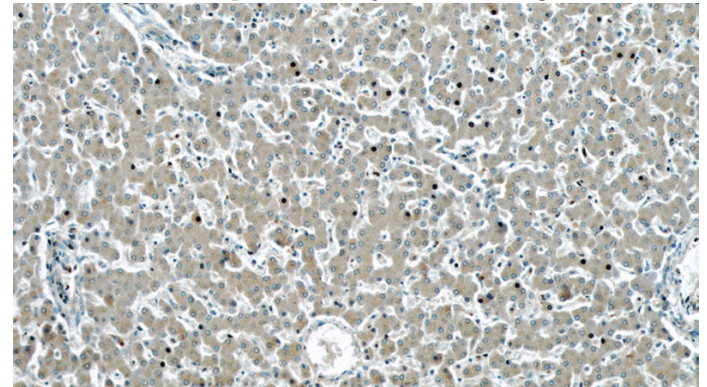
## Clonality

Polyclonal

IP Result of anti-ARHGAP26 (IP:Catalog No:111154, 4ug; Detection:Catalog No:111154 1:1000) with HepG2 cells lysate 3600ug.

## Ig Type

Rabbit IgG



## Applications

ELISA, WB, IHC, IP

## Dilutions

Recommended Dilution:

WB: 1:500-1:5000

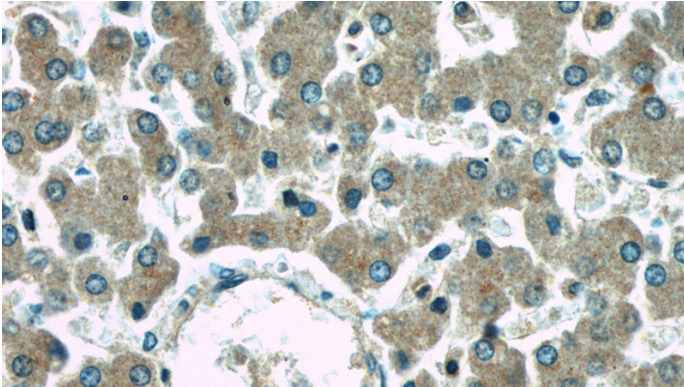
Immunohistochemical of paraffin-embedded human liver using Catalog No:111154(ARHGAP26

# GRAF antibody

Catalog Number: 111154

---

antibody) at dilution of 1:50 (under 10x lens)



Immunohistochemical of paraffin-embedded human liver using Catalog No:111154(ARHGAP26 antibody) at dilution of 1:50 (under 40x lens)