

GPX5 antibody

Catalog Number: 111150

Product name

GPX5 antibody

Specificity

human; other species not tested.

Antibody description

GPX5 Rabbit Polyclonal antibody. Positive IHC detected in human testis. Positive WB detected in human testis tissue, mouse liver tissue. Observed molecular weight by Western-blot: 25kd

Preparation

This antibody was obtained by immunization of Peptide (Accession Number: NM_001509). Purification method: Antigen affinity purified.

Formulation

PBS with 0.02% sodium azide and 50% glycerol pH 7.3.

Storage

Store at -20°C. DO NOT ALIQUOT

Clonality

Polyclonal

Ig Type

Rabbit IgG

Applications

ELISA, WB, IHC

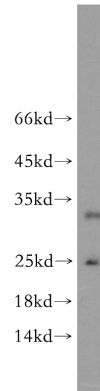
Dilutions

Recommended Dilution:

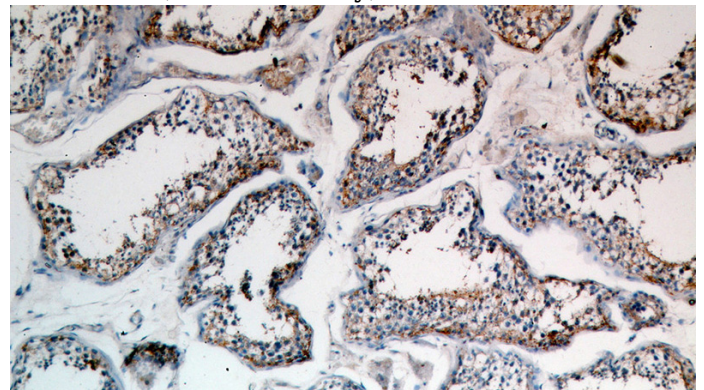
WB: 1:200-1:2000

IHC: 1:20-1:200

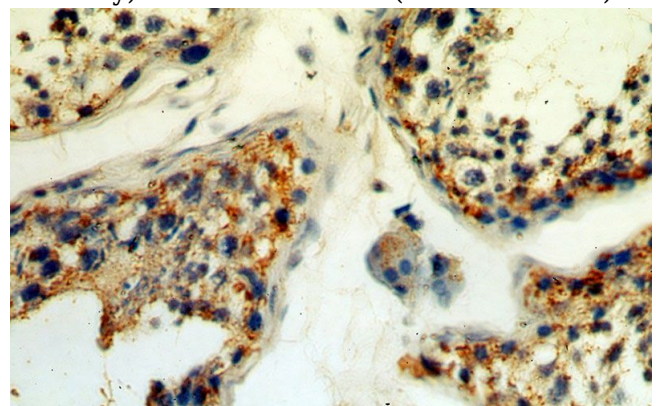
Validations



human testis tissue were subjected to SDS PAGE followed by western blot with Catalog No:111150(GPX5 antibody) at dilution of 1:200



Immunohistochemical of paraffin-embedded human testis using Catalog No:111150(GPX5 antibody) at dilution of 1:50 (under 10x lens)



Immunohistochemical of paraffin-embedded human testis using Catalog No:111150(GPX5 antibody) at dilution of 1:50 (under 40x lens)