

GPX4 antibody

Catalog Number: 111149

Product name

GPX4 antibody

WB: 1:500-1:5000

IP: 1:500-1:5000

Specificity

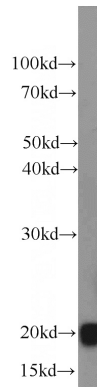
Human, Mouse, Rat; other species not tested.

IHC: 1:20-1:200

Antibody description

GPX4 Rabbit Polyclonal antibody. Positive IP detected in mouse kidney tissue. Positive WB detected in mouse kidney tissue, human testis tissue, mouse testis tissue. Positive IHC detected in human kidney tissue, human testis tissue. Observed molecular weight by Western-blot: 20kd-23kd

Validations



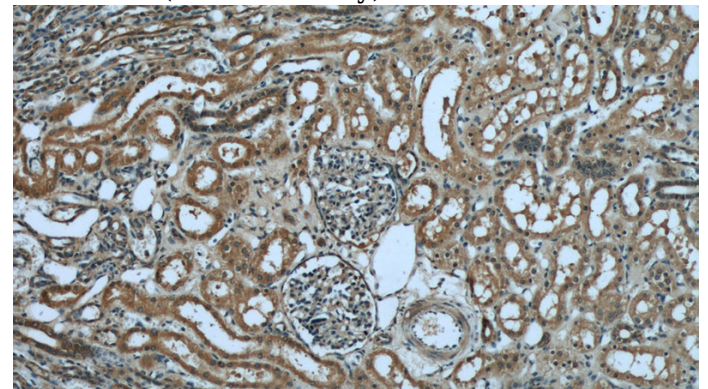
Preparation

This antibody was obtained by immunization of GPX4 recombinant protein (Accession Number: NM_002085). Purification method: Antigen affinity purified.

mouse kidney tissue were subjected to SDS PAGE followed by western blot with Catalog No:111149(GPX4 antibody) at dilution of 1:1000

Formulation

PBS with 0.1% sodium azide and 50% glycerol pH 7.3.



Storage

Store at -20°C. DO NOT ALIQUOT

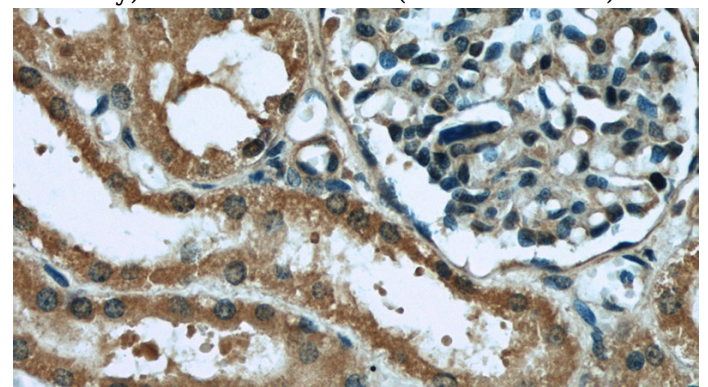
Clonality

Polyclonal

Immunohistochemical of paraffin-embedded human kidney using Catalog No:111149(GPX4 antibody) at dilution of 1:50 (under 10x lens)

Ig Type

Rabbit IgG



Applications

ELISA, WB, IHC, IP

Dilutions

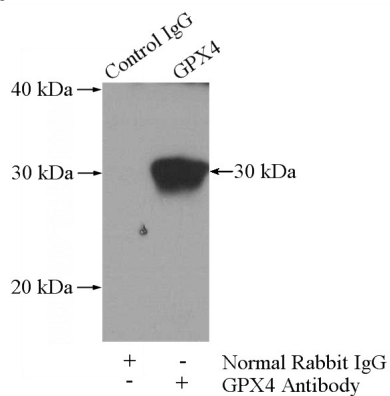
Recommended Dilution:

Immunohistochemical of paraffin-embedded

GPX4 antibody

Catalog Number: 111149

human kidney using Catalog No:111149(GPX4 antibody) at dilution of 1:50 (under 40x lens)



IP Result of anti-GPX4 (IP:Catalog No:111149, 4ug; Detection:Catalog No:111149 1:1000) with mouse kidney tissue lysate 4000ug.