

GPSM2 antibody

Catalog Number: 111144

Product name

GPSM2 antibody

Specificity

Human; other species not tested.

Antibody description

GPSM2 Rabbit Polyclonal antibody. Positive IHC detected in human pancreas cancer tissue. Positive WB detected in HeLa cells, human brain tissue. Observed molecular weight by Western-blot: 66-70 kDa

Preparation

This antibody was obtained by immunization of GPSM2 recombinant protein (Accession Number: BC027732). Purification method: Antigen affinity purified.

Formulation

PBS with 0.1% sodium azide and 50% glycerol pH 7.3.

Storage

Store at -20°C. DO NOT ALIQUOT

Clonality

Polyclonal

Ig Type

Rabbit IgG

Applications

ELISA, WB, IHC

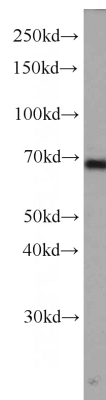
Dilutions

Recommended Dilution:

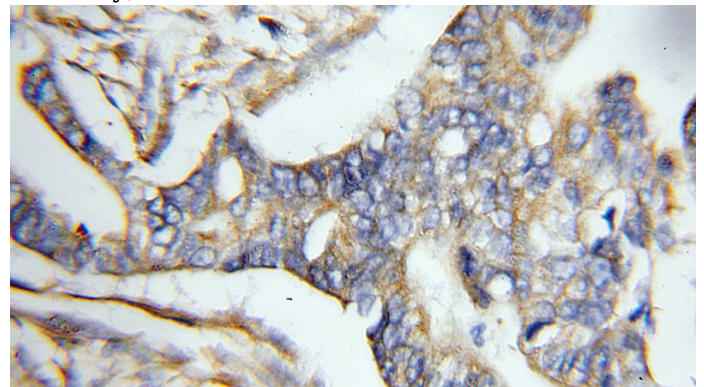
WB: 1:200-1:2000

IHC: 1:20-1:200

Validations



HeLa cells were subjected to SDS PAGE followed by western blot with Catalog No:111144(GPSM2 antibody) at dilution of 1:500



Immunohistochemical of paraffin-embedded human pancreas cancer using Catalog No:111144(GPSM2 antibody) at dilution of 1:50 (under 10x lens)