

# GPS2 antibody

Catalog Number: 111143

## Product name

GPS2 antibody

IHC: 1:20-1:200

IF: 1:10-1:100

## Specificity

Human, Mouse, Rat; other species not tested.

## Antibody description

GPS2 Rabbit Polyclonal antibody. Positive WB detected in BxPC-3 cells. Positive IF detected in BxPC-3 cells. Positive IHC detected in human liver tissue, human lung cancer tissue, mouse lung tissue. Observed molecular weight by Western-blot: 37 kDa

## Preparation

This antibody was obtained by immunization of GPS2 recombinant protein (Accession Number: NM\_004489). Purification method: Antigen affinity purified.

## Formulation

PBS with 0.1% sodium azide and 50% glycerol pH 7.3.

## Storage

Store at -20°C. DO NOT ALIQUOT

## Clonality

Polyclonal

## Ig Type

Rabbit IgG

## Applications

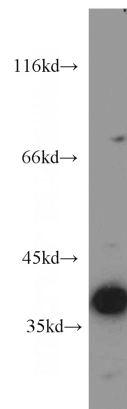
ELISA, WB, IHC, IF

## Dilutions

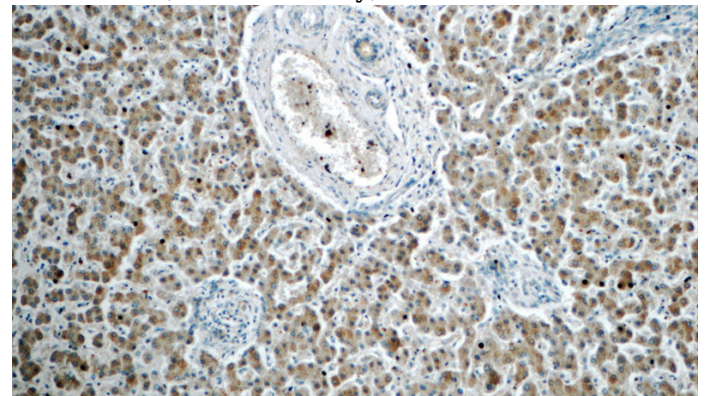
Recommended Dilution:

WB: 1:200-1:2000

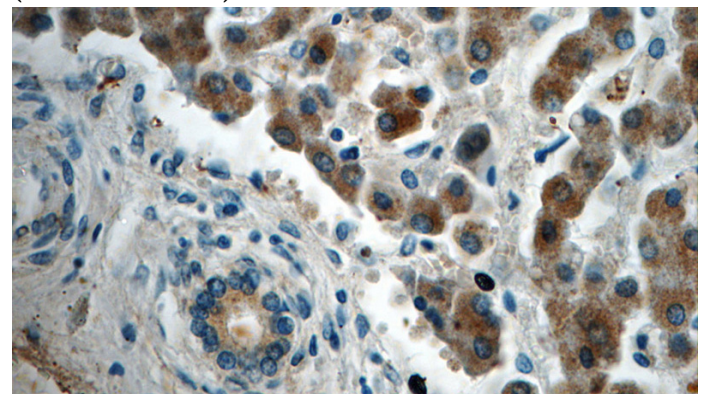
## Validations



BxPC-3 cells were subjected to SDS PAGE followed by western blot with Catalog No:111143(GPS2 antibody) at dilution of 1:300



Immunohistochemistry of paraffin-embedded human liver tissue slide using Catalog No:111143(GPS2 Antibody) at dilution of 1:50 (under 10x lens)



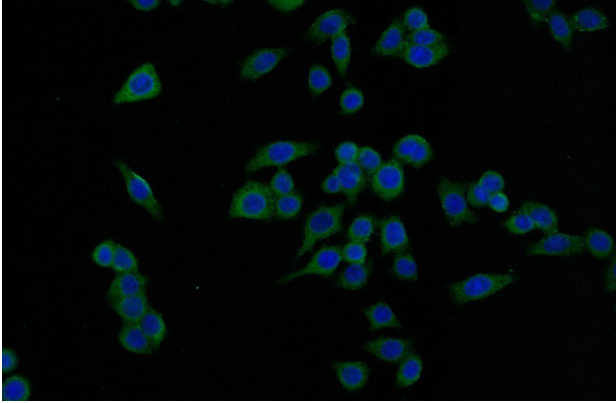
Immunohistochemistry of paraffin-embedded

# GPS2 antibody

Catalog Number: 111143

---

human liver tissue slide using Catalog No:111143(GPS2 Antibody) at dilution of 1:50 (under 40x lens)



Immunofluorescent analysis of BxPC-3 cells using Catalog No:111143(GPS2 Antibody) at dilution of 1:25 and Alexa Fluor 488-conjugated AffiniPure Goat Anti-Rabbit IgG(H+L)