

# GPR177 antibody



Catalog Number: 111120

## Product name

GPR177 antibody

Recommended Dilution:

WB: 1:200-1:2000

## Specificity

Human, Mouse, Rat; other species not tested.

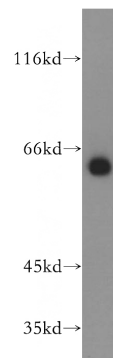
IP: 1:200-1:2000

IHC: 1:20-1:200

## Antibody description

GPR177 Rabbit Polyclonal antibody. Positive IP detected in mouse liver tissue. Positive WB detected in mouse liver tissue, HeLa cells, Jurkat cells, mouse heart tissue, rat liver tissue, SH-SY5Y cells. Positive IHC detected in human ovary tissue, human kidney tissue, human lung tissue, mouse liver tissue. Observed molecular weight by Western-blot: 46-62 kDa

## Validations



## Preparation

This antibody was obtained by immunization of GPR177 recombinant protein (Accession Number: NM\_024911). Purification method: Antigen affinity purified.

mouse liver tissue were subjected to SDS PAGE followed by western blot with Catalog No:111120(GPR177 antibody) at dilution of 1:400

## Formulation

PBS with 0.02% sodium azide and 50% glycerol pH 7.3.

## Storage

Store at -20°C. DO NOT ALIQUOT

## Clonality

Polyclonal

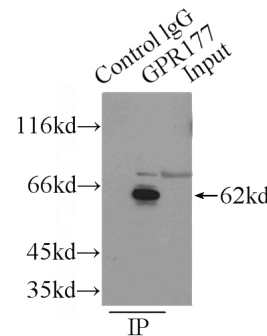
## Ig Type

Rabbit IgG

## Applications

ELISA, WB, IHC, IP

## Dilutions

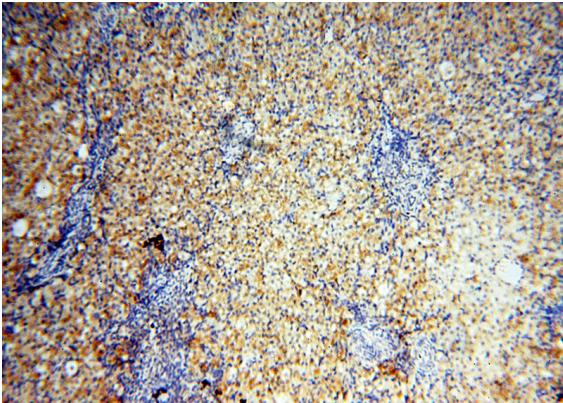


IP Result of anti-GPR177 (IP:Catalog No:111120, 3ug; Detection:Catalog No:111120 1:500) with mouse liver tissue lysate 12500ug.

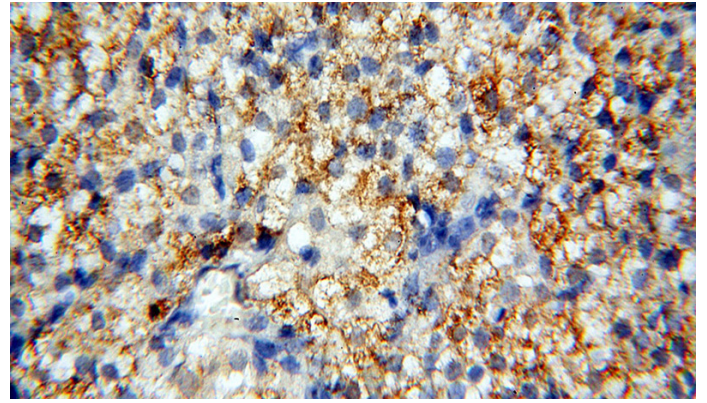
# GPR177 antibody

Catalog Number: 111120

---



Immunohistochemical of paraffin-embedded human ovary using Catalog No:111120(GPR177 antibody) at dilution of 1:100 (under 10x lens)



Immunohistochemical of paraffin-embedded human ovary using Catalog No:111120(GPR177 antibody) at dilution of 1:100 (under 40x lens)