

# GMDS antibody



Catalog Number: 111096

## Product name

GMDS antibody

## Specificity

Human, Mouse, Rat; other species not tested.

## Antibody description

GMDS Rabbit Polyclonal antibody. Positive WB detected in HeLa cells, rat spleen tissue. Positive IHC detected in human lymphoma tissue. Observed molecular weight by Western-blot: 40-42 kDa

## Preparation

This antibody was obtained by immunization of GMDS recombinant protein (Accession Number: NM\_001500). Purification method: Antigen affinity purified.

## Formulation

PBS with 0.02% sodium azide and 50% glycerol pH 7.3.

## Storage

Store at -20°C. DO NOT ALIQUOT

## Clonality

Polyclonal

## Ig Type

Rabbit IgG

## Applications

ELISA, WB, IHC

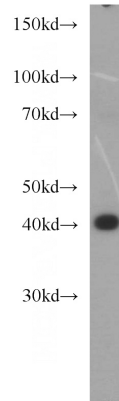
## Dilutions

Recommended Dilution:

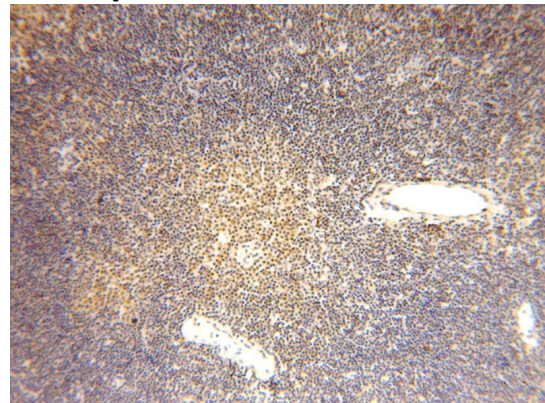
WB: 1:500-1:5000

IHC: 1:20-1:200

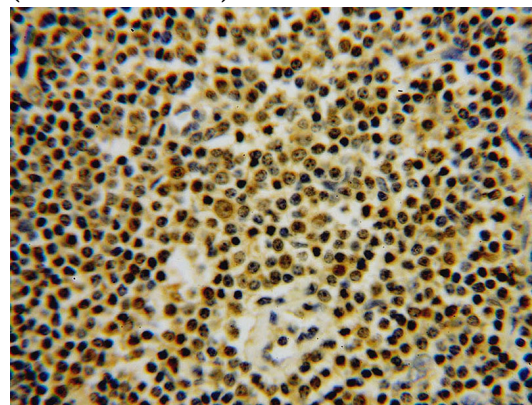
## Validations



HeLa cells were subjected to SDS PAGE followed by western blot with Catalog No:111096(GMDS antibody) at dilution of 1:1000



Immunohistochemical of paraffin-embedded human lymphoma using Catalog No:111096(GMDS antibody) at dilution of 1:50 (under 10x lens)



Immunohistochemical of paraffin-embedded human lymphoma using Catalog

# GMDS antibody



Catalog Number: 111096

---

No:111096(GMDS antibody) at dilution of 1:50 (under 40x lens)