

GMCL1 antibody



Catalog Number: 111094

Product name

GMCL1 antibody

WB: 1:500-1:5000

IHC: 1:20-1:200

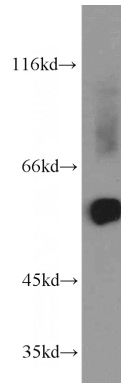
Specificity

Human, Mouse, Rat; other species not tested.

Antibody description

GMCL1 Rabbit Polyclonal antibody. Positive IHC detected in human thyroid tissue, human testis tissue. Positive WB detected in human heart tissue, mouse heart tissue, mouse placenta tissue, mouse skeletal muscle tissue. Observed molecular weight by Western-blot: 55 kDa

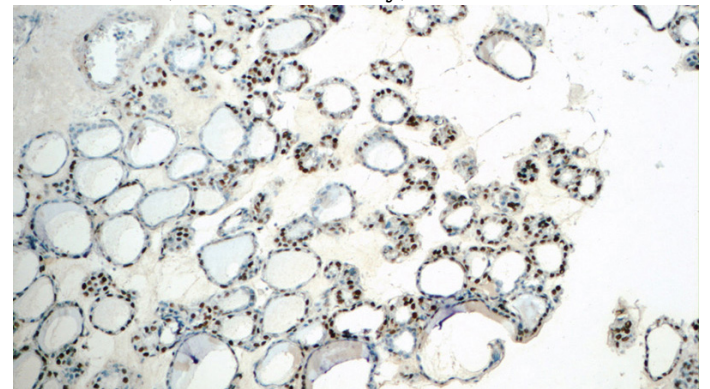
Validations



human heart tissue were subjected to SDS PAGE followed by western blot with Catalog No:111094(GMCL1 antibody) at dilution of 1:1500

Preparation

This antibody was obtained by immunization of GMCL1 recombinant protein (Accession Number: NM_178439). Purification method: Antigen affinity purified.



Formulation

PBS with 0.1% sodium azide and 50% glycerol pH 7.3.

Storage

Store at -20°C. DO NOT ALIQUOT

Clonality

Polyclonal

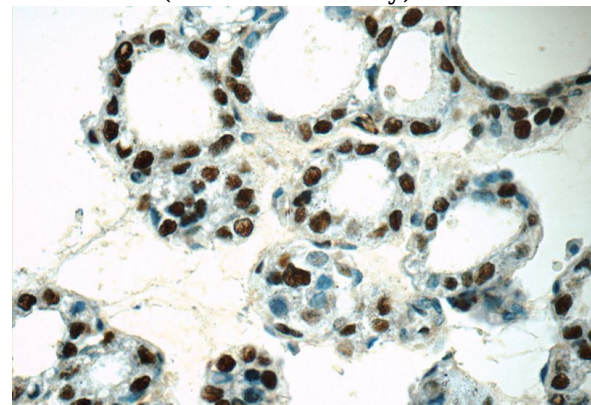
Ig Type

Rabbit IgG

Applications

ELISA, WB, IHC

Immunohistochemistry of paraffin-embedded human thyroid tissue slide using Catalog No:111094(GMCL1 Antibody) at dilution of 1:50



Dilutions

Recommended Dilution:

Immunohistochemistry of paraffin-embedded human thyroid tissue slide using Catalog No:111094(GMCL1 Antibody) at dilution of 1:50