

Glypican 3 antibody



Catalog Number: 111088

Product name

Glypican 3 antibody

IHC: 1:20-1:200

IF: 1:20-1:200

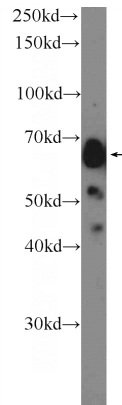
Specificity

Human; other species not tested.

Validations

Antibody description

Glypican 3 Rabbit Polyclonal antibody. Positive WB detected in HepG2 cells. Positive IF detected in HEK-293 cells. Positive IHC detected in human liver cancer tissue. Observed molecular weight by Western-blot: 66 kDa



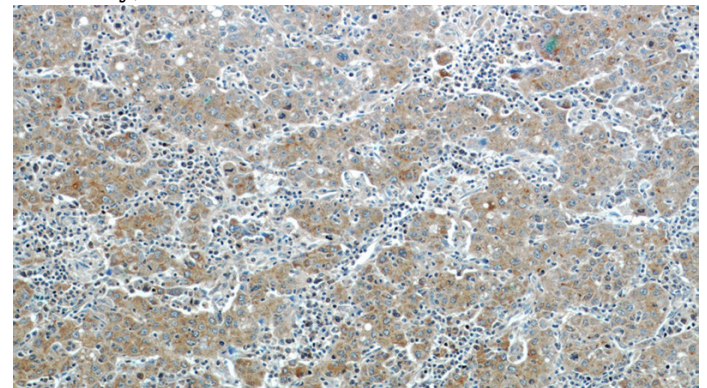
Preparation

This antibody was obtained by immunization of Glypican 3 recombinant protein (Accession Number: NM_004484). Purification method: Antigen affinity purified.

HepG2 cells were subjected to SDS PAGE followed by western blot with Catalog No:111088(GPC3 Antibody) at dilution of 1:600

Formulation

PBS with 0.1% sodium azide and 50% glycerol pH 7.3.



Storage

Store at -20°C. DO NOT ALIQUOT

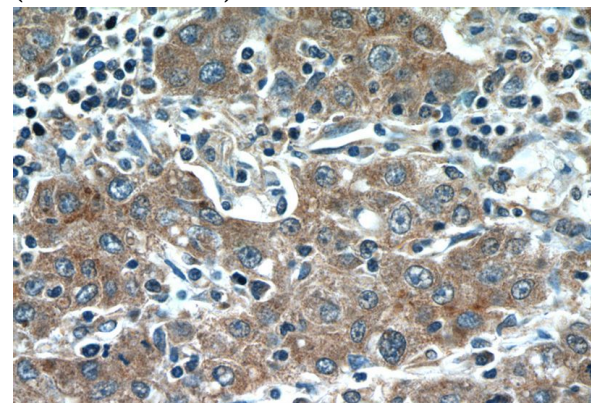
Clonality

Polyclonal

Immunohistochemistry of paraffin-embedded human liver cancer tissue slide using Catalog No:111088(GPC3 Antibody) at dilution of 1:50 (under 10x lens)

Ig Type

Rabbit IgG



Applications

ELISA, IHC, WB, IF

Dilutions

Recommended Dilution:

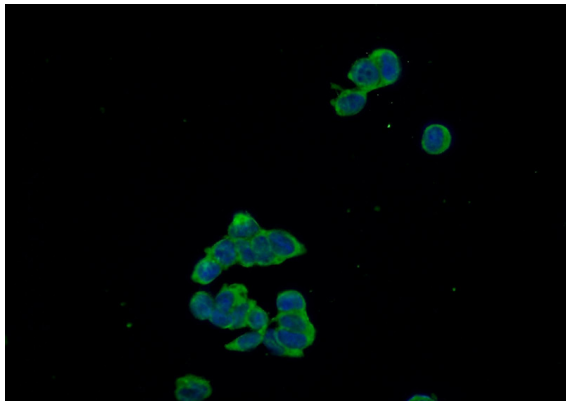
WB: 1:200-1:2000

Immunohistochemistry of paraffin-embedded

Glypican 3 antibody

Catalog Number: 111088

human liver cancer tissue slide using Catalog No:111088(GPC3 Antibody) at dilution of 1:50 (under 40x lens)



Immunofluorescent analysis of HEK-293 cells using Catalog No:111088(GPC3 Antibody) at dilution of 1:50 and Alexa Fluor 488-conjugated AffiniPure Goat Anti-Rabbit IgG(H+L)