

# Glypican 1 antibody



Catalog Number: 111087

## Product name

Glypican 1 antibody

WB: 1:500-1:5000

IP: 1:200-1:2000

## Specificity

Human, Mouse, Rat; other species not tested.

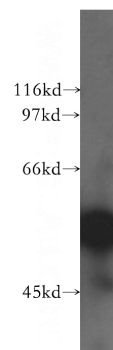
IHC: 1:50-1:500

IF: 1:10-1:100

## Antibody description

Glypican 1 Rabbit Polyclonal antibody. Positive IF detected in BxPC-3 cells. Positive IHC detected in human pancreas cancer tissue. Positive WB detected in NIH/3T3 cells, BxPC-3 cells, HepG2 cells. Positive IP detected in BxPC-3 cells. Observed molecular weight by Western-blot: 55 kDa, 80 kDa

## Validations



## Preparation

This antibody was obtained by immunization of Glypican 1 recombinant protein (Accession Number: NM\_002081). Purification method: Antigen affinity purified.

NIH/3T3 cells were subjected to SDS PAGE followed by western blot with Catalog No:111087(GPC1 antibody) at dilution of 1:300

## Formulation

PBS with 0.02% sodium azide and 50% glycerol pH 7.3.

## Storage

Store at -20°C. DO NOT ALIQUOT

## Clonality

Polyclonal

## Ig Type

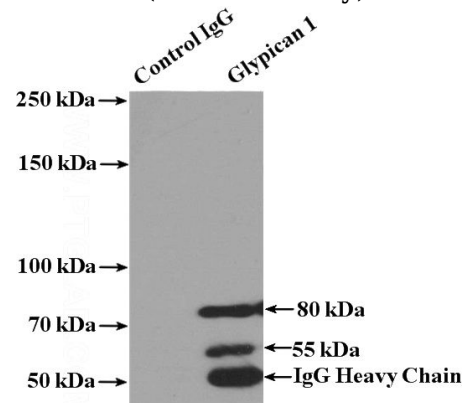
Rabbit IgG

## Applications

ELISA, WB, IF, IHC, IP

## Dilutions

Recommended Dilution:

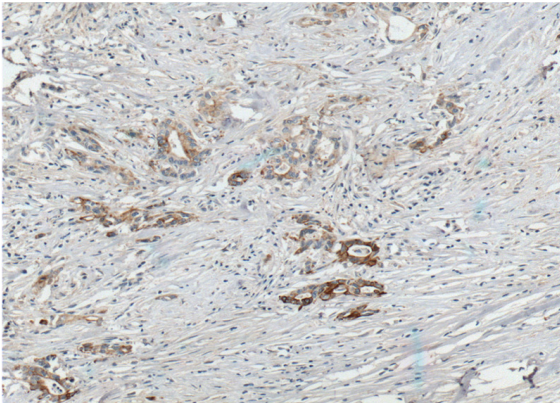


IP Result of anti-GPC1 (IP:Catalog No:111087, 4ug; Detection:Catalog No:111087 1:500) with BxPC-3 cells lysate 2800ug.

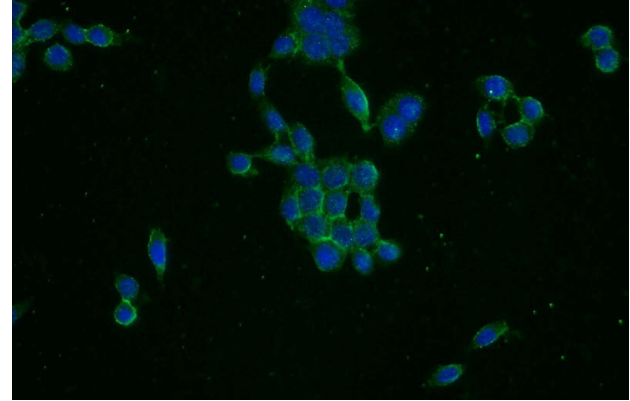
# Glypican 1 antibody

Catalog Number: 111087

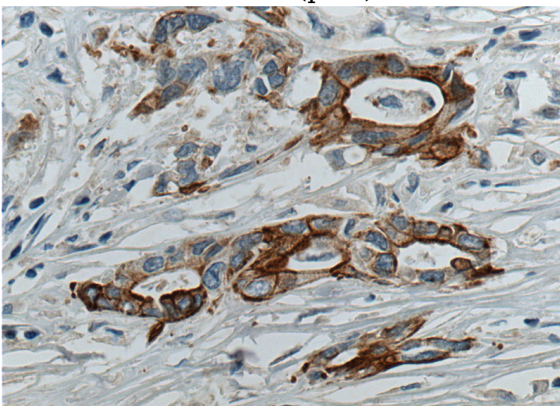
---



Immunohistochemistry of paraffin-embedded human pancreas cancer tissue slide using Catalog No:111087(GPC1 Antibody) at dilution of 1:200 (under 40x lens). heat mediated antigen retrieved with Tris-EDTA buffer(pH9).



Immunofluorescent analysis of BxPC-3 cells using Catalog No:111087(GPC1 Antibody) at dilution of 1:25 and Alexa Fluor 488-conjugated AffiniPure Goat Anti-Rabbit IgG(H+L)



Immunohistochemistry of paraffin-embedded human pancreas cancer tissue slide using Catalog No:111087(GPC1 Antibody) at dilution of 1:200 (under 10x lens). heat mediated antigen retrieved with Tris-EDTA buffer(pH9).