

Glycophorin A antibody



Catalog Number: 111085

Product name

Glycophorin A antibody

Specificity

Human; other species not tested.

Antibody description

Glycophorin A Rabbit Polyclonal antibody. Positive IHC detected in human colon cancer tissue. Positive FC detected in K-562 cells. Positive WB detected in K-562 cells. Observed molecular weight by Western-blot: 34 kDa

Preparation

This antibody was obtained by immunization of Glycophorin A recombinant protein (Accession Number: NM_002099). Purification method: Antigen affinity purified.

Formulation

PBS with 0.02% sodium azide and 50% glycerol pH 7.3.

Storage

Store at -20°C. DO NOT ALIQUOT

Clonality

Polyclonal

Ig Type

Rabbit IgG

Applications

ELISA, WB, IHC, FC

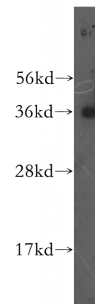
Dilutions

Recommended Dilution:

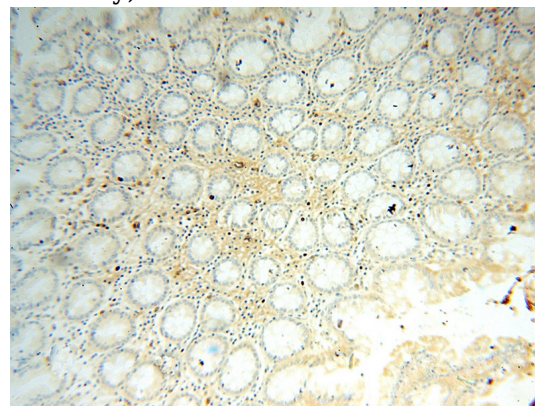
WB: 1:200-1:2000

IHC: 1:20-1:200

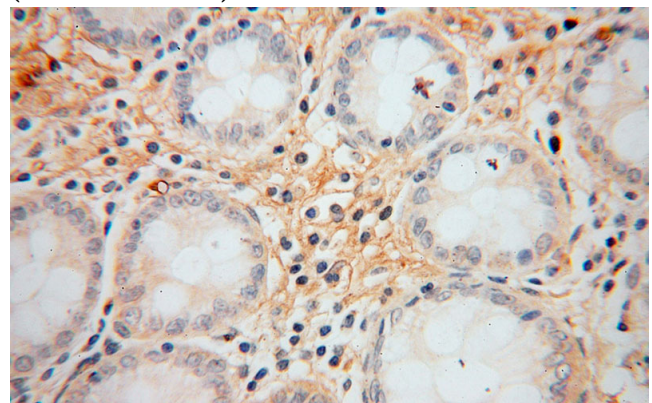
Validations



K-562 cells were subjected to SDS PAGE followed by western blot with Catalog No:111085(GYPA antibody) at dilution of 1:500



Immunohistochemical of paraffin-embedded human colon cancer using Catalog No:111085(GYPA antibody) at dilution of 1:50 (under 10x lens)



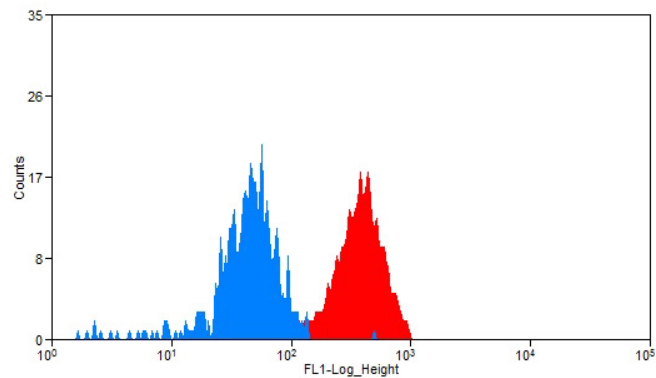
Immunohistochemical of paraffin-embedded human colon cancer using Catalog

Glycophorin A antibody



Catalog Number: 111085

No:111085(GYPA antibody) at dilution of 1:50
(under 40x lens)



1X10⁶ K-562 cells were stained with 0.2ug GYPA antibody (Catalog No:111085, red) and control antibody (blue). Fixed with 90% MeOH blocked with 3% BSA (30 min). Alexa Fluor 488-conjugated AffiniPure Goat Anti-Rabbit IgG(H+L) with dilution 1:1500.