

# Glutamine synthetase antibody



Catalog Number: 111081

## Product name

Glutamine synthetase antibody

## Specificity

Human, Mouse, Rat; other species not tested.

## Antibody description

Glutamine synthetase Rabbit Polyclonal antibody. Positive WB detected in mouse brain tissue, mouse liver tissue, rat liver tissue. Positive IHC detected in human liver cancer tissue. Positive FC detected in HepG2 cells. Observed molecular weight by Western-blot: 44kd

## Preparation

This antibody was obtained by immunization of Glutamine synthetase recombinant protein (Accession Number: NM\_002065). Purification method: Antigen affinity purified.

## Formulation

PBS with 0.1% sodium azide and 50% glycerol pH 7.3.

## Storage

Store at -20°C. DO NOT ALIQUOT

## Clonality

Polyclonal

## Ig Type

Rabbit IgG

## Applications

ELISA, WB, IHC, FC

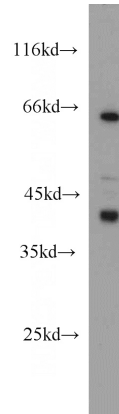
## Dilutions

Recommended Dilution:

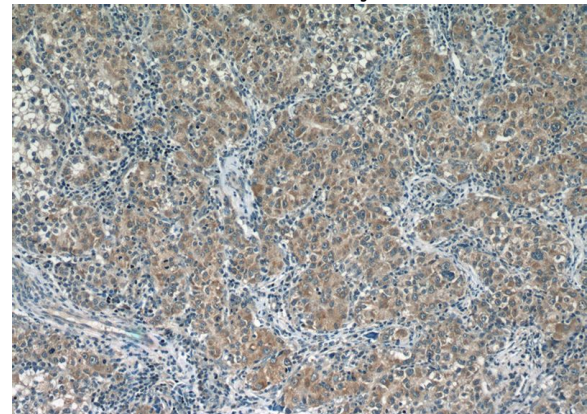
WB: 1:200-1:1000

IHC: 1:20-1:200

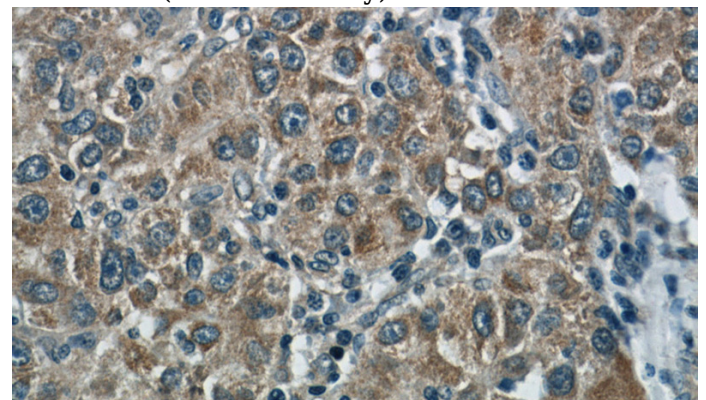
## Validations



mouse brain tissue were subjected to SDS PAGE followed by western blot with Catalog No:111081(GLUL antibody) at dilution of 1:100



Immunohistochemistry of paraffin-embedded human liver cancer slide using Catalog No:111081(GLUL Antibody) at dilution of 1:50

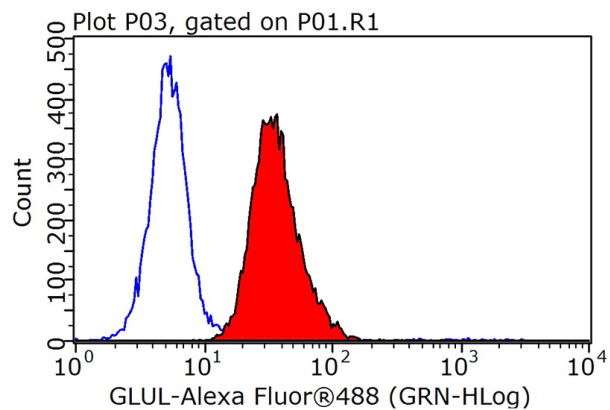


Immunohistochemistry of paraffin-embedded human liver cancer slide using Catalog No:111081(GLUL Antibody) at dilution of 1:50

# Glutamine synthetase antibody



Catalog Number: 111081



$1 \times 10^6$  HepG2 cells were stained with 0.2ug Glutamine synthetase antibody (Catalog No:111081, red) and control antibody (blue). Fixed with 90% MeOH blocked with 3% BSA (30 min). Alexa Fluor 488-conjugated AffiniPure Goat Anti-Rabbit IgG(H+L) with dilution 1:1000.