

# Glutamate receptor 2 antibody



Catalog Number: 111080

## Product name

Glutamate receptor 2 antibody

## Specificity

Human, Mouse, Rat; other species not tested.

## Antibody description

Glutamate receptor 2 Rabbit Polyclonal antibody. Positive WB detected in mouse brain tissue, human brain tissue, SKOV-3 cells. Positive IP detected in mouse brain tissue. Observed molecular weight by Western-blot: 94-105 kDa

## Preparation

This antibody was obtained by immunization of Glutamate receptor 2 recombinant protein (Accession Number: NM\_001083619). Purification method: Antigen affinity purified.

## Formulation

PBS with 0.1% sodium azide and 50% glycerol pH 7.3.

## Storage

Store at -20°C. DO NOT ALIQUOT

## Clonality

Polyclonal

## Ig Type

Rabbit IgG

## Applications

ELISA, WB, IP

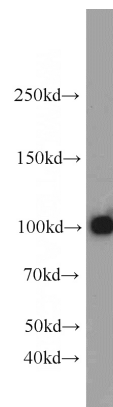
## Dilutions

Recommended Dilution:

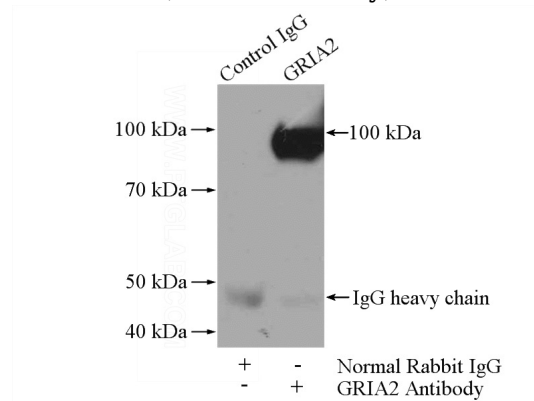
WB: 1:500-1:5000

IP: 1:200-1:2000

## Validations



mouse brain tissue were subjected to SDS PAGE followed by western blot with Catalog No:111080(GRIA2 antibody) at dilution of 1:1000



IP Result of anti-GRIA2 (IP:Catalog No:111080, 4ug; Detection:Catalog No:111080 1:500) with mouse brain tissue lysate 4000ug.