

# GLUT3 antibody



Catalog Number: 111078

## Product name

GLUT3 antibody

## Immunogen

[Human SLC2A3 Recombinant protein \(GST tag\)](#)

## Specificity

Human, Mouse; other species not tested.

## Antibody description

GLUT3 Rabbit Polyclonal antibody. Positive WB detected in mouse brain tissue, HEK-293 cells, HeLa cells, HepG2 cells. Positive IHC detected in human brain tissue. Observed molecular weight by Western-blot: 48kd

## Preparation

This antibody was obtained by immunization of GLUT3 recombinant protein (Accession Number: NM\_006931). Purification method: Antigen affinity purified.

## Formulation

PBS with 0.02% sodium azide and 50% glycerol pH 7.3.

## Storage

Store at -20°C. DO NOT ALIQUOT

## Clonality

Polyclonal

## Ig Type

Rabbit IgG

## Applications

ELISA, IHC, WB

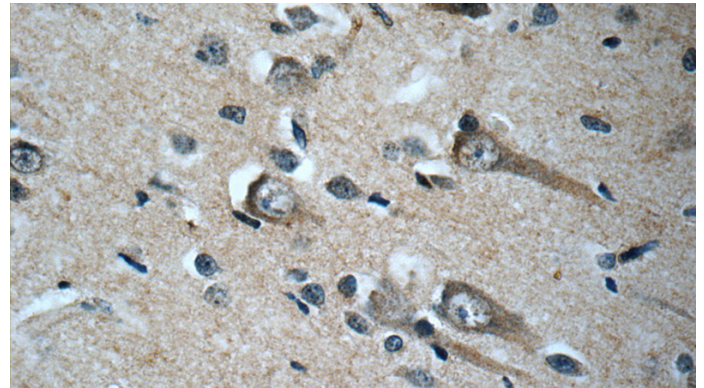
## Dilutions

Recommended Dilution:

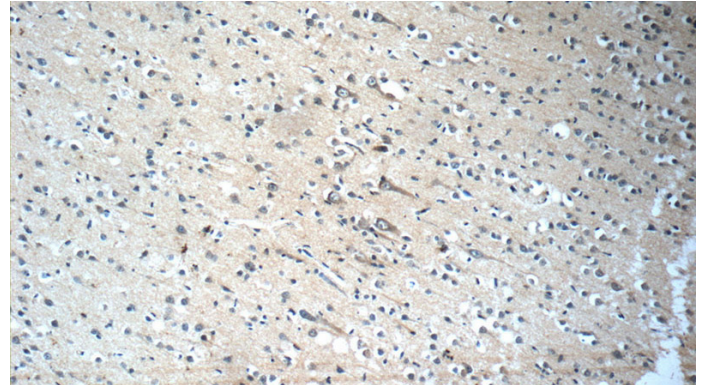
WB: 1:200-1:2000

IHC: 1:20-1:200

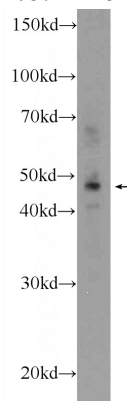
## Validations



Immunohistochemistry of paraffin-embedded human brain slide using Catalog No:111078(SLC2A3 Antibody) at dilution of 1:50



Immunohistochemistry of paraffin-embedded human brain slide using Catalog No:111078(SLC2A3 Antibody) at dilution of 1:50



mouse brain tissue were subjected to SDS PAGE

# GLUT3 antibody



Catalog Number: 111078

---

followed by western blot with Catalog

No:111078(SLC2A3 Antibody) at dilution of 1:600