

# GLUT2 antibody

Catalog Number: 111077

## Product name

GLUT2 antibody

## Immunogen

[Human SLC2A2 Recombinant protein \(GST tag\)](#)

## Specificity

Human, Rat, Mouse; other species not tested.

## Antibody description

GLUT2 Rabbit Polyclonal antibody. Positive WB detected in rat liver tissue, mouse kidney tissue, mouse small intestine tissue. Positive IP detected in mouse kidney tissue. Positive IHC detected in human small intestine tissue. Observed molecular weight by Western-blot: 60-70 kDa, 38-45 kDa

## Preparation

This antibody was obtained by immunization of GLUT2 recombinant protein (Accession Number: XM\_047448761). Purification method: Antigen affinity purified.

## Formulation

PBS with 0.1% sodium azide and 50% glycerol pH 7.3.

## Storage

Store at -20°C. DO NOT ALIQUOT

## Clonality

Polyclonal

## Ig Type

Rabbit IgG

## Applications

ELISA, IHC, WB, IP

## Dilutions

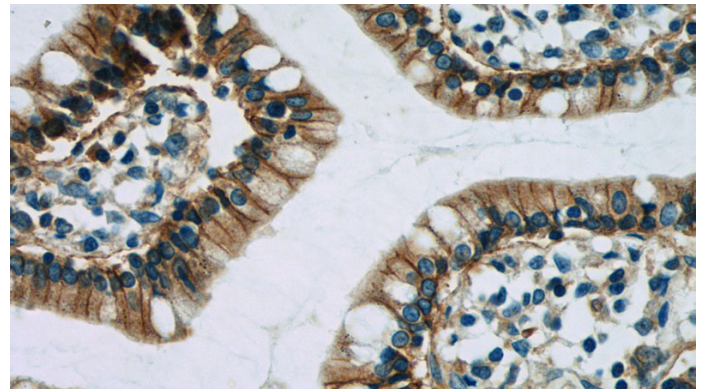
Recommended Dilution:

WB: 1:200-1:1000

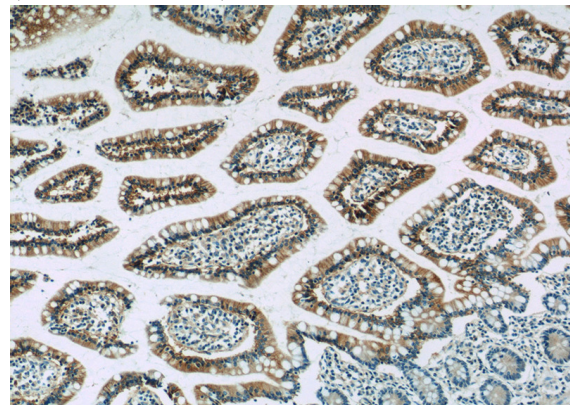
IP: 1:500-1:5000

IHC: 1:20-1:200

## Validations



Immunohistochemistry of paraffin-embedded human small intestine tissue slide using Catalog No:111077(SLC2A2 Antibody) at dilution of 1:50 (under 40x lens)

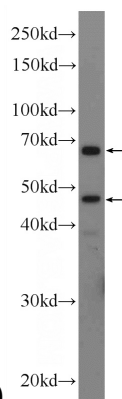


Immunohistochemistry of paraffin-embedded human small intestine tissue slide using Catalog No:111077(SLC2A2 Antibody) at dilution of 1:50

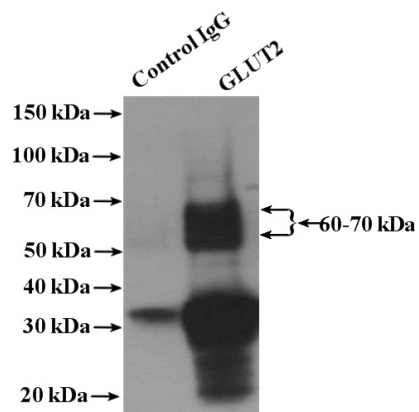
# GLUT2 antibody

Catalog Number: 111077

---



(under 10x lens)



rat liver tissue were subjected to SDS PAGE followed by western blot with Catalog No:111077(SLC2A2 Antibody) at dilution of 1:300

IP Result of anti-SLC2A2 (IP:Catalog No:111077, 4ug; Detection:Catalog No:111077 1:1000) with mouse kidney tissue lysate 4000ug.