

GPR108 antibody



Catalog Number: 111073

Product name

GPR108 antibody

IHC: 1:20-1:200

Specificity

Human, Mouse, Rat; other species not tested.

Antibody description

GPR108 Rabbit Polyclonal antibody. Positive WB detected in mouse kidney tissue, rat kidney tissue. Positive IHC detected in human kidney tissue. Observed molecular weight by Western-blot: 61-70 kDa

Preparation

This antibody was obtained by immunization of GPR108 recombinant protein (Accession Number: BC007862). Purification method: Antigen Affinity purified.

Formulation

PBS with 0.02% sodium azide and 50% glycerol pH 7.3.

Storage

Store at -20°C. DO NOT ALIQUOT

Clonality

Polyclonal

Ig Type

Rabbit IgG

Applications

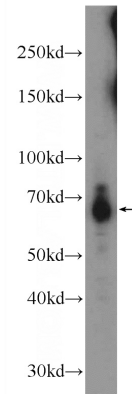
ELISA, WB, IHC

Dilutions

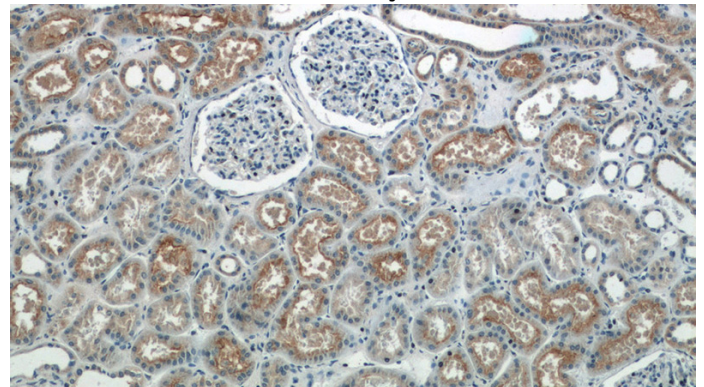
Recommended Dilution:

WB: 1:500-1:5000

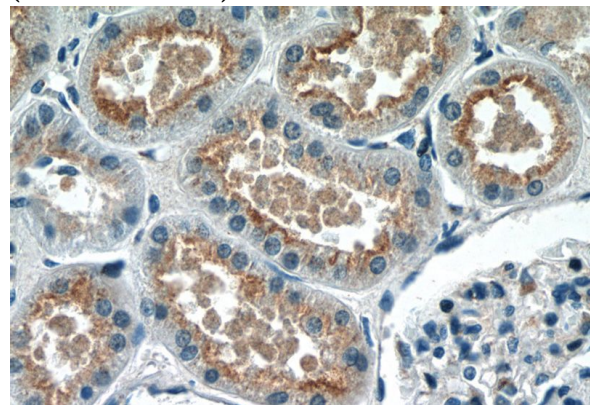
Validations



mouse kidney tissue were subjected to SDS PAGE followed by western blot with Catalog No:111073(GPR108 antibody) at dilution of 1:600



Immunohistochemistry of paraffin-embedded human kidney tissue slide using Catalog No:111073(GPR108 Antibody) at dilution of 1:50 (under 10x lens)



Immunohistochemistry of paraffin-embedded human kidney tissue slide using Catalog No:111073(GPR108 Antibody) at dilution of 1:50

GPR108 antibody



Catalog Number: 111073

(under 40x lens)