

# GPM6A antibody



Catalog Number: 111066

## Product name

GPM6A antibody

IP: 1:200-1:2000

IHC: 1:20-1:200

## Specificity

Human, Mouse, Rat; other species not tested.

## Antibody description

GPM6A Rabbit Polyclonal antibody. Positive IP detected in mouse brain tissue. Positive WB detected in mouse retina tissue, rat brain tissue. Positive IHC detected in human brain tissue. Observed molecular weight by Western-blot: 31 kDa

## Preparation

This antibody was obtained by immunization of GPM6A recombinant protein (Accession Number: NM\_201591). Purification method: Antigen affinity purified.

## Formulation

PBS with 0.02% sodium azide and 50% glycerol pH 7.3.

## Storage

Store at -20°C. DO NOT ALIQUOT

## Clonality

Polyclonal

## Ig Type

Rabbit IgG

## Applications

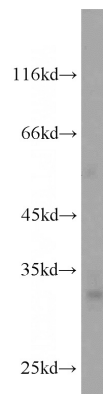
ELISA, WB, IP, IHC

## Dilutions

Recommended Dilution:

WB: 1:200-1:2000

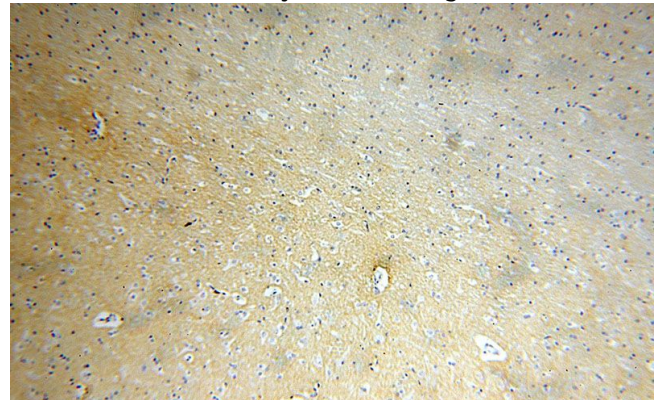
## Validations



mouse retina tissue were subjected to SDS PAGE followed by western blot with Catalog No:111066(GPM6A antibody) at dilution of 1:600



IP Result of anti-GPM6A (IP:Catalog No:111066, 3ug; Detection:Catalog No:111066 1:800) with mouse brain tissue lysate 6500ug.

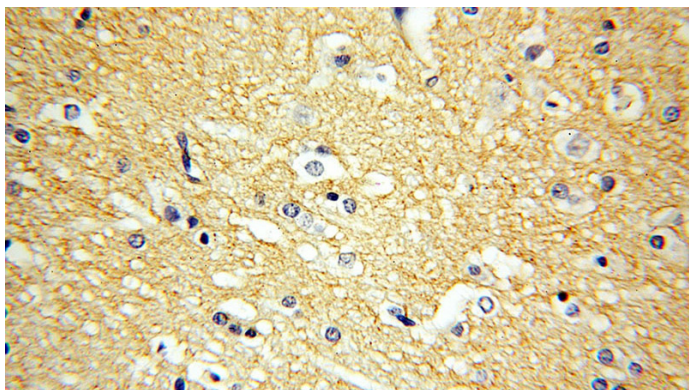


Immunohistochemical of paraffin-embedded human brain using Catalog No:111066(GPM6A antibody) at dilution of 1:50 (under 10x lens)

# GPM6A antibody

Catalog Number: 111066

---



Immunohistochemical of paraffin-embedded human brain using Catalog No:111066(GPM6A antibody) at dilution of 1:50 (under 40x lens)