

GPD2 antibody



Catalog Number: 111063

Product name

GPD2 antibody

WB: 1:1000-1:10000

IP: 1:500-1:5000

Specificity

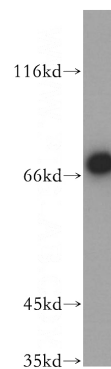
Human, Mouse, Rat; other species not tested.

IHC: 1:20-1:200

Antibody description

GPD2 Rabbit Polyclonal antibody. Positive WB detected in mouse skeletal muscle tissue, mouse liver tissue, mouse pancreas tissue. Positive IP detected in mouse skeletal muscle tissue. Positive IHC detected in human testis tissue, human brain tissue, human spleen tissue. Observed molecular weight by Western-blot: 68 kDa

Validations



Preparation

This antibody was obtained by immunization of GPD2 recombinant protein (Accession Number: BC019874). Purification method: Antigen affinity purified.

mouse skeletal muscle tissue were subjected to SDS PAGE followed by western blot with Catalog No:111063(GPD2 antibody) at dilution of 1:800

Formulation

PBS with 0.02% sodium azide and 50% glycerol pH 7.3.

Storage

Store at -20°C. DO NOT ALIQUOT

Clonality

Polyclonal

Ig Type

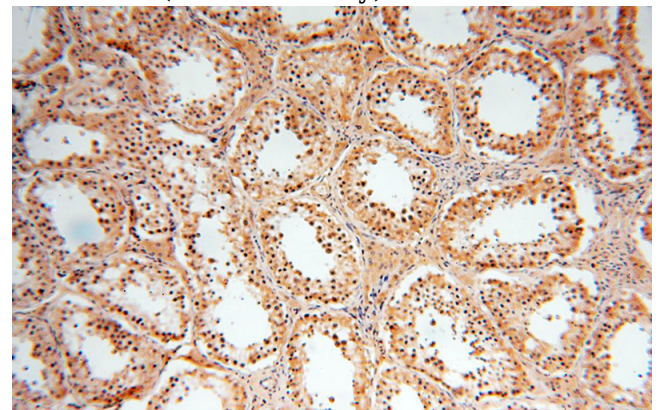
Rabbit IgG

Applications

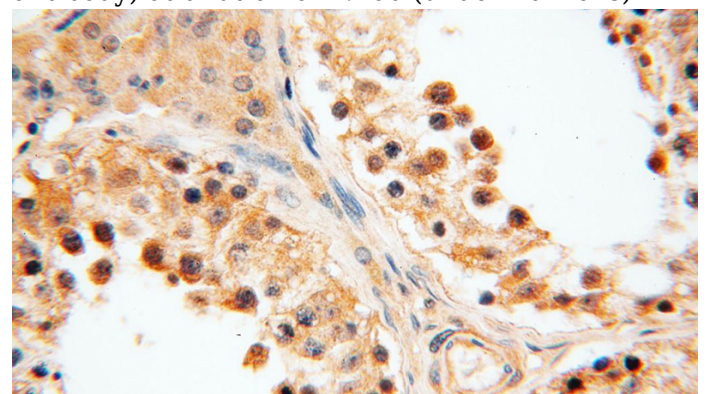
ELISA, WB, IHC, IP

Dilutions

Recommended Dilution:



Immunohistochemical of paraffin-embedded human testis using Catalog No:111063(GPD2 antibody) at dilution of 1:100 (under 10x lens)



GPD2 antibody



Catalog Number: 111063

Immunohistochemical of paraffin-embedded human testis using Catalog No:111063(GPD2 antibody) at dilution of 1:100 (under 40x lens)

IP Result of anti-GPD2 (IP:Catalog No:111063, 3ug; Detection:Catalog No:111063 1:1000) with mouse skeletal muscle tissue lysate 3600ug.

