

# GPATCH2 antibody



Catalog Number: 111057

## Product name

GPATCH2 antibody

## Specificity

Human, Mouse; other species not tested.

## Antibody description

GPATCH2 Rabbit Polyclonal antibody. Positive WB detected in mouse spleen tissue, mouse kidney tissue, mouse thymus tissue. Positive IHC detected in human breast cancer tissue, human lung cancer tissue, human testis tissue. Observed molecular weight by Western-blot: 65-70 kDa

## Preparation

This antibody was obtained by immunization of GPATCH2 recombinant protein (Accession Number: NM\_001297754). Purification method: Antigen affinity purified.

## Formulation

PBS with 0.1% sodium azide and 50% glycerol pH 7.3.

## Storage

Store at -20°C. DO NOT ALIQUOT

## Clonality

Polyclonal

## Ig Type

Rabbit IgG

## Applications

ELISA, IHC, WB

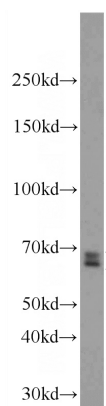
## Dilutions

Recommended Dilution:

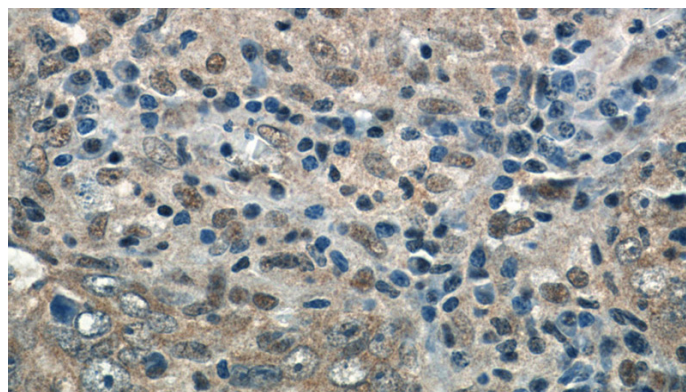
WB: 1:200-1:2000

IHC: 1:20-1:200

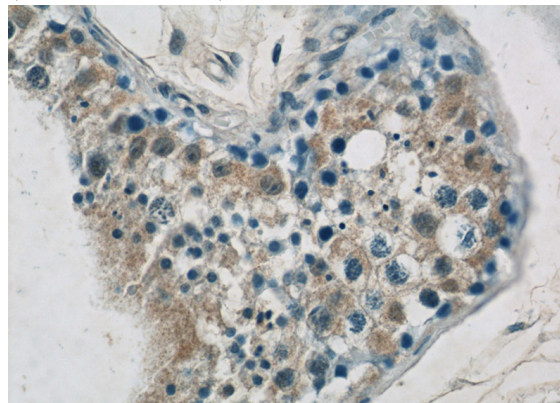
## Validations



mouse spleen tissue were subjected to SDS PAGE followed by western blot with Catalog No:111057(GPATCH2 Antibody) at dilution of 1:600



Immunohistochemistry of paraffin-embedded human breast cancer tissue slide using Catalog No:111057(GPATCH2 Antibody) at dilution of 1:50 (under 40x lens)



Immunohistochemistry of paraffin-embedded human testis tissue slide using Catalog No:111057(GPATCH2 Antibody) at dilution of 1:50 (under 40x lens)

# GPATCH2 antibody



Catalog Number: 111057

---

No:111057(GPATCH2 Antibody) at dilution of 1:50 (under 40x lens)