

GOT2 antibody



Catalog Number: 111051

Product name

GOT2 antibody

Recommended Dilution:

WB: 1:500-1:5000

Specificity

Human, Mouse, Rat; other species not tested.

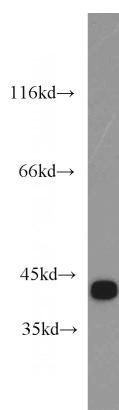
IHC: 1:20-1:200

IF: 1:20-1:200

Antibody description

GOT2 Rabbit Polyclonal antibody. Positive FC detected in HEK-293 cells. Positive IF detected in MCF-7 cells. Positive IHC detected in human skin cancer tissue, human kidney tissue, human liver tissue, human skin tissue. Positive WB detected in mouse brain tissue, A431 cells, HepG2 cells, mouse heart tissue, mouse spleen tissue, rat brain tissue. Observed molecular weight by Western-blot: 43-45 kDa

Validations



Preparation

This antibody was obtained by immunization of GOT2 recombinant protein (Accession Number: NM_002080). Purification method: Antigen affinity purified.

mouse brain tissue were subjected to SDS PAGE followed by western blot with Catalog No:111051(GOT2 antibody) at dilution of 1:1200

Formulation

PBS with 0.02% sodium azide and 50% glycerol pH 7.3.

Storage

Store at -20°C. DO NOT ALIQUOT

Clonality

Polyclonal

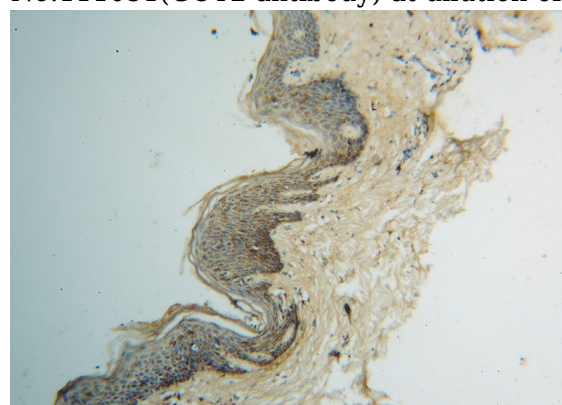
Ig Type

Rabbit IgG

Applications

ELISA, WB, IHC, IF, FC

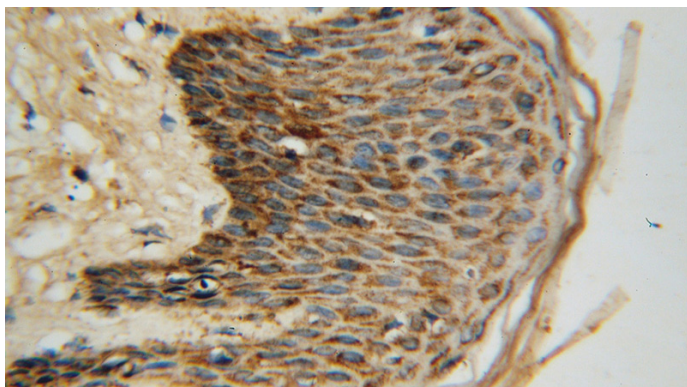
Dilutions



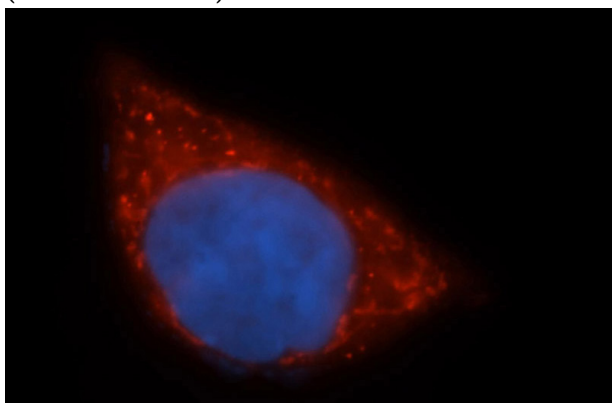
Immunohistochemical of paraffin-embedded human skin cancer using Catalog No:111051(GOT2 antibody) at dilution of 1:100 (under 10x lens)

GOT2 antibody

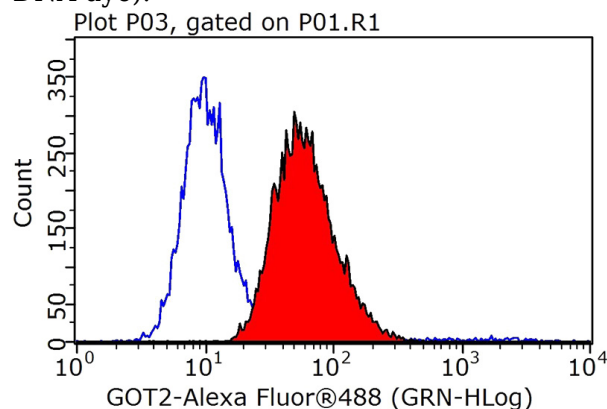
Catalog Number: 111051



Immunohistochemical of paraffin-embedded human skin cancer using Catalog No:111051(GOT2 antibody) at dilution of 1:100 (under 40x lens)



Immunofluorescent analysis of MCF-7 cells, using GOT2 antibody Catalog No:111051 at 1:50 dilution and Rhodamine-labeled goat anti-rabbit IgG (red). Blue pseudocolor = DAPI (fluorescent DNA dye).



1X10⁶ HEK-293 cells were stained with 0.2ug GOT2 antibody (Catalog No:111051, red) and control antibody (blue). Fixed with 90% MeOH blocked with 3% BSA (30 min). Alexa Fluor 488-conjugated AffiniPure Goat Anti-Rabbit IgG(H+L) with dilution 1:1000.