

# GOLPH3 antibody



Catalog Number: 111045

## Product name

GOLPH3 antibody

## Immunogen

[Human GOLPH3 Recombinant protein \(His tag\)](#)

## Specificity

Human, Mouse, Rat; other species not tested.

## Antibody description

GOLPH3 Rabbit Polyclonal antibody. Positive WB detected in HeLa cells, mouse lung tissue, mouse testis tissue, rat testis tissue. Positive IP detected in mouse testis tissue. Positive IF detected in HepG2 cells. Positive IHC detected in human placenta tissue, human colon cancer tissue, human colon tissue. Observed molecular weight by Western-blot: 34 kDa

## Preparation

This antibody was obtained by immunization of GOLPH3 recombinant protein (Accession Number: NM\_022130). Purification method: Antigen affinity purified.

## Formulation

PBS with 0.02% sodium azide and 50% glycerol pH 7.3.

## Storage

Store at -20°C. DO NOT ALIQUOT

## Clonality

Polyclonal

## Ig Type

Rabbit IgG

## Applications

ELISA, WB, IHC, IF, IP

## Dilutions

Recommended Dilution:

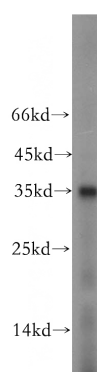
WB: 1:500-1:5000

IP: 1:500-1:5000

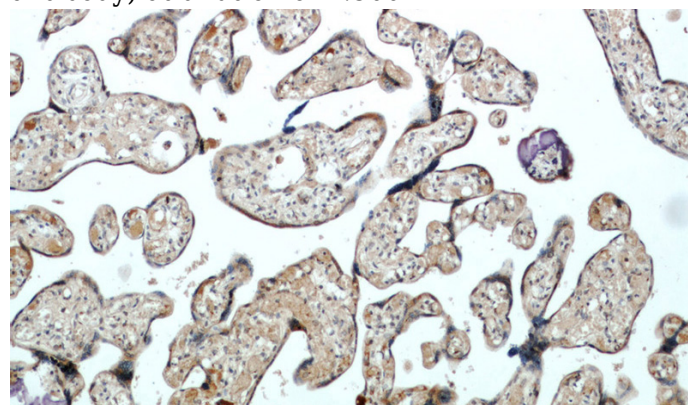
IHC: 1:20-1:200

IF: 1:10-1:100

## Validations



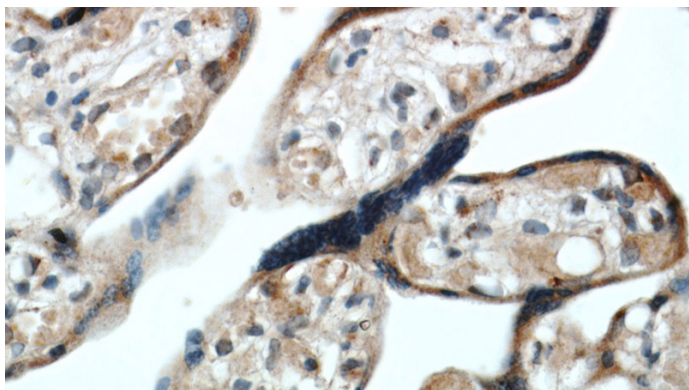
HeLa cells were subjected to SDS PAGE followed by western blot with Catalog No:111045(GOLPH3 antibody) at dilution of 1:500



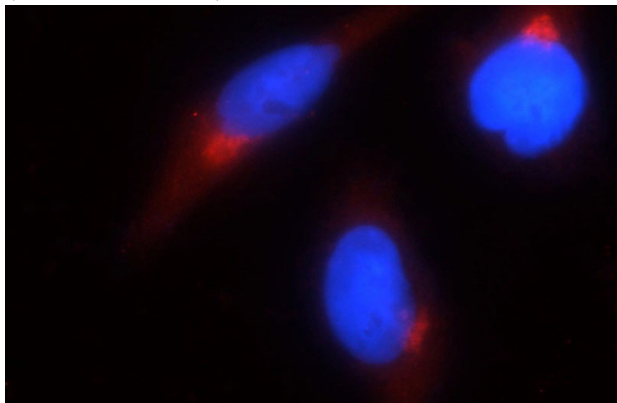
Immunohistochemical of paraffin-embedded human placenta using Catalog No:111045(GOLPH3 antibody) at dilution of 1:100 (under 10x lens)

## GOLPH3 antibody

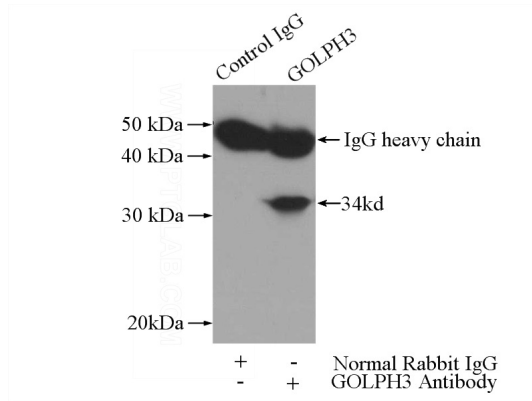
Catalog Number: 111045



Immunohistochemical of paraffin-embedded  
human placenta using Catalog  
No:111045(GOLPH3 antibody) at dilution of 1:100  
(under 40x lens)



Immunofluorescent analysis of HepG2 cells using Catalog No:111045(GOLPH3 Antibody) at dilution of 1:25 and Rhodamine-Goat anti-Rabbit IgG



IP Result of anti-GOLPH3 (IP:Catalog No:111045, 3ug; Detection:Catalog No:111045 1:1500) with mouse testis tissue lysate 4000ug.