

GLO1 antibody

Catalog Number: 111027

Product name

GLO1 antibody

Specificity

Human, Mouse, Rat; other species not tested.

Antibody description

GLO1 Rabbit Polyclonal antibody. Positive WB detected in HepG2 cells, HEK-293 cells, HeLa cells, Raji cells, rat liver tissue. Positive IP detected in HepG2 cells. Observed molecular weight by Western-blot: 21-25 kDa

Preparation

This antibody was obtained by immunization of GLO1 recombinant protein (Accession Number: NM_006708). Purification method: Antigen affinity purified.

Formulation

PBS with 0.02% sodium azide and 50% glycerol pH 7.3.

Storage

Store at -20°C. DO NOT ALIQUOT

Clonality

Polyclonal

Ig Type

Rabbit IgG

Applications

ELISA, WB, IP

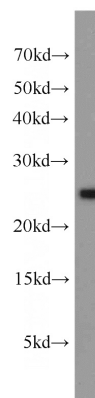
Dilutions

Recommended Dilution:

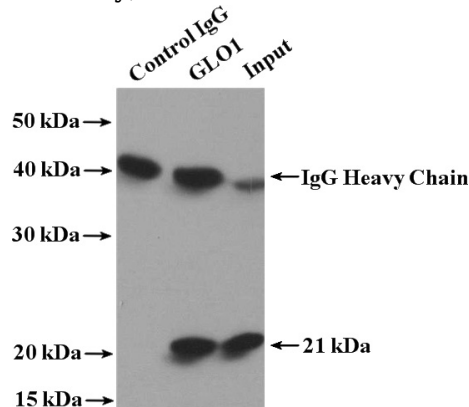
WB: 1:500-1:5000

IP: 1:500-1:5000

Validations



HepG2 cells were subjected to SDS PAGE followed by western blot with Catalog No:111027(GLO1 antibody) at dilution of 1:1000



IP Result of anti-GLO1 (IP:Catalog No:111027, 4ug; Detection:Catalog No:111027 1:1000) with HepG2 cells lysate 1000ug.