

# GLI2-Specific antibody



Catalog Number: 111021

## Product name

GLI2-Specific antibody

IHC: 1:20-1:200

IF: 1:10-1:100

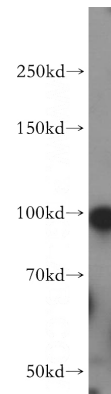
## Specificity

Human, Mouse, Rat; other species not tested.

## Validations

## Antibody description

GLI2-Specific Rabbit Polyclonal antibody. Positive WB detected in HEK-293 cells, human testis tissue. Positive IF detected in Hela cells, MCF-7 cells. Positive IHC detected in human kidney tissue. Observed molecular weight by Western-blot: 88kd



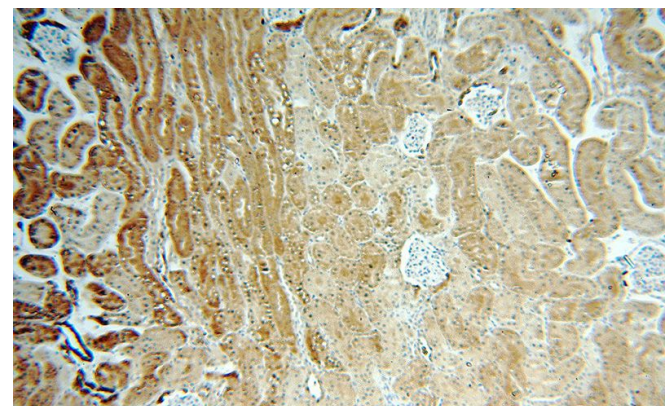
## Preparation

This antibody was obtained by immunization of Peptide (Accession Number: NM\_001081125). Purification method: Antigen affinity purified.

HEK-293 cells were subjected to SDS PAGE followed by western blot with Catalog No:111021 (GLI2-Specific antibody) at dilution of 1:400

## Formulation

PBS with 0.02% sodium azide and 50% glycerol pH 7.3.



## Storage

Store at -20°C. DO NOT ALIQUOT

## Clonality

Polyclonal

## Ig Type

Rabbit IgG

## Applications

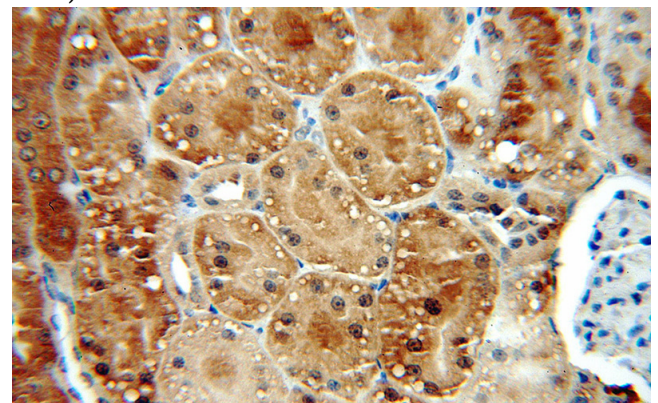
ELISA, WB, IHC, IF

## Dilutions

Recommended Dilution:

WB: 1:200-1:2000

Immunohistochemical of paraffin-embedded human kidney using Catalog No:111021 (GLI2-Specific antibody) at dilution of 1:50 (under 10x lens)

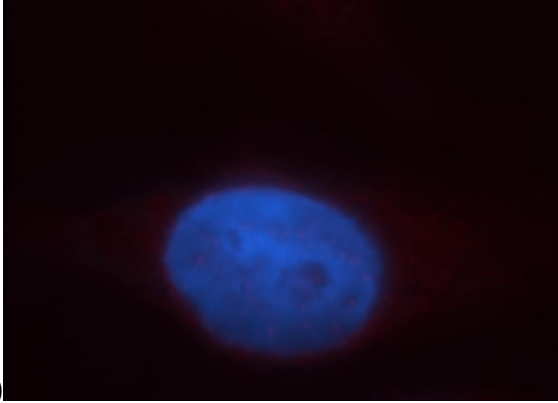


# GLI2-Specific antibody

Catalog Number: 111021

---

Immunohistochemical of paraffin-embedded human kidney using Catalog No:111021(GLI2-Specific antibody) at dilution of 1:50 (under 40x



lens)

Immunofluorescent analysis of Hela cells, using Gli2 antibody Catalog No:111021 at 1:25 dilution and Rhodamine-labeled goat anti-rabbit IgG (red). Blue pseudocolor = DAPI (fluorescent DNA dye).