

GIPC1 antibody



Catalog Number: 110979

Product name

GIPC1 antibody

IP: 1:200-1:2000

IHC: 1:20-1:200

Specificity

Human, Mouse, Rat; other species not tested.

IF: 1:10-1:100

Antibody description

GIPC1 Rabbit Polyclonal antibody. Positive IHC detected in human breast cancer tissue. Positive IF detected in HepG2 cells, A2780 cells. Positive IP detected in mouse brain tissue. Positive WB detected in mouse brain tissue, HepG2 cells. Observed molecular weight by Western-blot: 42kd

Preparation

This antibody was obtained by immunization of GIPC1 recombinant protein (Accession Number: NM_202468). Purification method: Antigen affinity purified.

Formulation

PBS with 0.02% sodium azide and 50% glycerol pH 7.3.

Storage

Store at -20°C. DO NOT ALIQUOT

Clonality

Polyclonal

Ig Type

Rabbit IgG

Applications

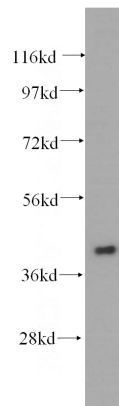
ELISA, WB, IHC, IP, IF

Dilutions

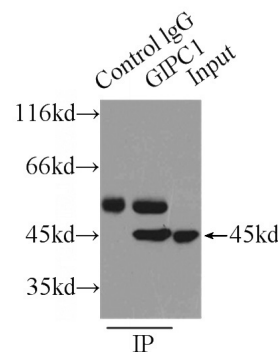
Recommended Dilution:

WB: 1:200-1:2000

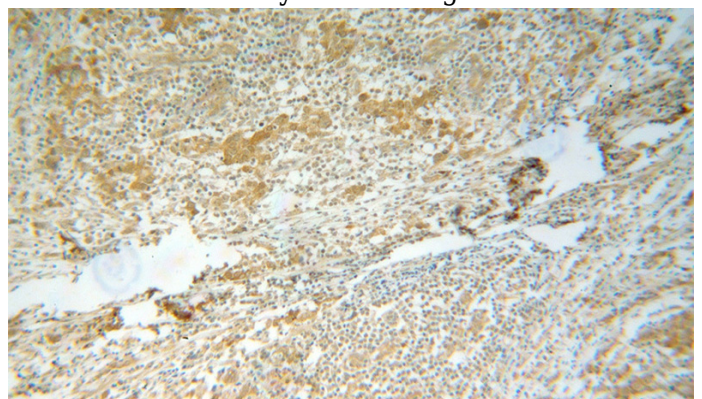
Validations



mouse brain tissue were subjected to SDS PAGE followed by western blot with Catalog No:110979(GIPC1 antibody) at dilution of 1:500



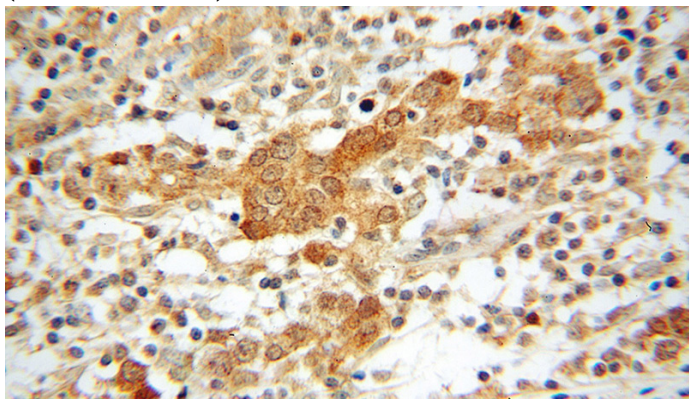
IP Result of anti-GIPC1 (IP:Catalog No:110979, 4ug; Detection:Catalog No:110979 1:500) with mouse brain tissue lysate 9500ug.



GIPC1 antibody

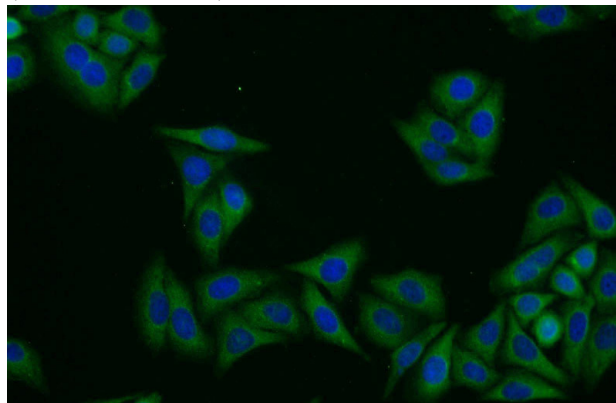
Catalog Number: 110979

Immunohistochemical of paraffin-embedded human breast cancer using Catalog No:110979(GIPC1 antibody) at dilution of 1:100 (under 10x lens)



Immunohistochemical of paraffin-embedded human breast cancer using Catalog

No:110979(GIPC1 antibody) at dilution of 1:100 (under 40x lens)



Immunofluorescent analysis of HepG2 cells using Catalog No:110979(GIPC1 Antibody) at dilution of 1:25 and Alexa Fluor 488-conjugated AffiniPure Goat Anti-Rabbit IgG(H+L)