

GHDC antibody



Catalog Number: 110964

Product name

GHDC antibody

IHC: 1:20-1:200

IF: 1:20-1:200

Specificity

Human, Mouse; other species not tested.

Antibody description

GHDC Rabbit Polyclonal antibody. Positive WB detected in HEK-293 cells. Positive IF detected in HEK-293 cells. Positive IHC detected in human brain tissue, human kidney tissue. Observed molecular weight by Western-blot: 57 kDa

Preparation

This antibody was obtained by immunization of GHDC recombinant protein (Accession Number: NM_032484). Purification method: Antigen affinity purified.

Formulation

PBS with 0.1% sodium azide and 50% glycerol pH 7.3.

Storage

Store at -20°C. DO NOT ALIQUOT

Clonality

Polyclonal

Ig Type

Rabbit IgG

Applications

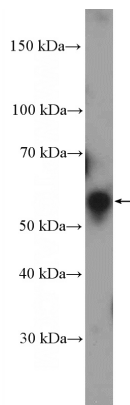
ELISA, WB, IHC, IF

Dilutions

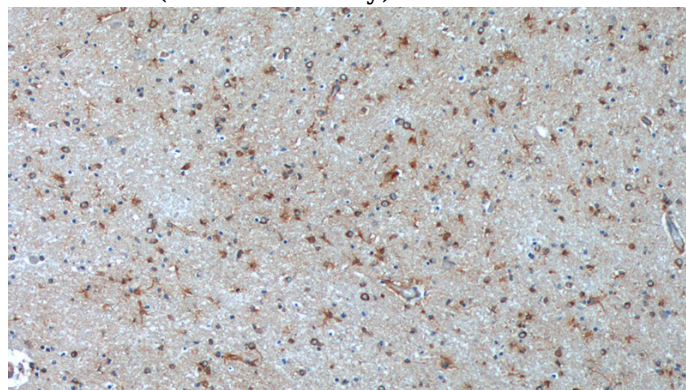
Recommended Dilution:

WB: 1:200-1:2000

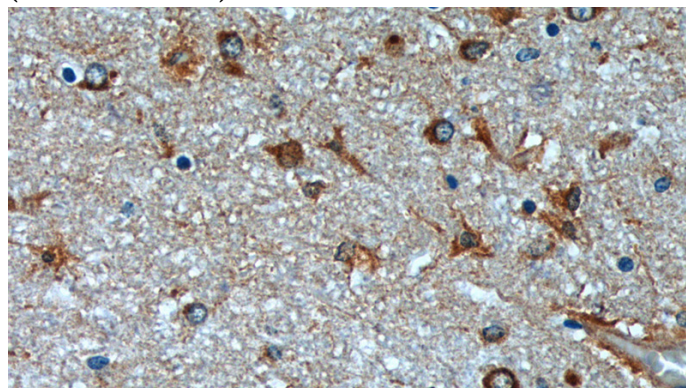
Validations



HEK-293 cells were subjected to SDS PAGE followed by western blot with Catalog No:110964(GHDC Antibody) at dilution of 1:600



Immunohistochemistry of paraffin-embedded human brain tissue slide using Catalog No:110964(GHDC Antibody) at dilution of 1:200 (under 10x lens)

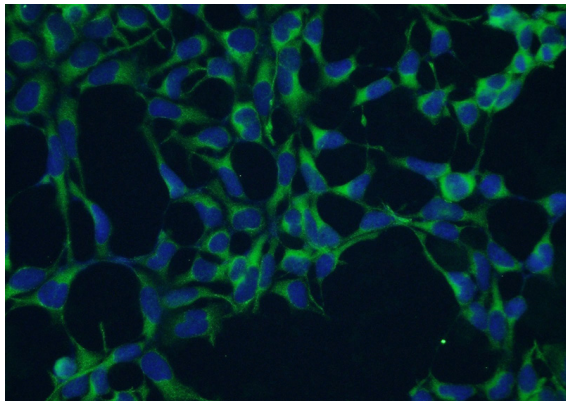


Immunohistochemistry of paraffin-embedded

GHDC antibody

Catalog Number: 110964

human brain tissue slide using Catalog No:110964(GHDC Antibody) at dilution of 1:200 (under 40x lens)



Immunofluorescent analysis of HEK-293 cells using Catalog No:110964(GHDC Antibody) at dilution of 1:50 and Alexa Fluor 488-conjugated AffiniPure Goat Anti-Rabbit IgG(H+L)