

GGPS1 antibody



Catalog Number: 110960

Product name

GGPS1 antibody

Recommended Dilution:

WB: 1:500-1:5000

Specificity

Human, Mouse, Rat; other species not tested.

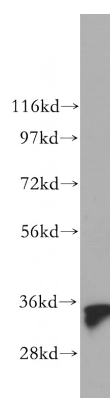
IP: 1:200-1:2000

IHC: 1:20-1:200

Antibody description

GGPS1 Rabbit Polyclonal antibody. Positive WB detected in mouse brain tissue, human heart tissue, human placenta tissue, human testis tissue, mouse bladder tissue. Positive IP detected in mouse brain tissue. Positive IHC detected in human kidney tissue, human liver tissue, human testis tissue. Observed molecular weight by Western-blot: 35 kDa

Validations



Preparation

This antibody was obtained by immunization of GGPS1 recombinant protein (Accession Number: NM_004837). Purification method: Antigen affinity purified.

mouse brain tissue were subjected to SDS PAGE followed by western blot with Catalog No:110960(GGPS1 antibody) at dilution of 1:500

Formulation

PBS with 0.02% sodium azide and 50% glycerol pH 7.3.

Storage

Store at -20°C. DO NOT ALIQUOT

Clonality

Polyclonal

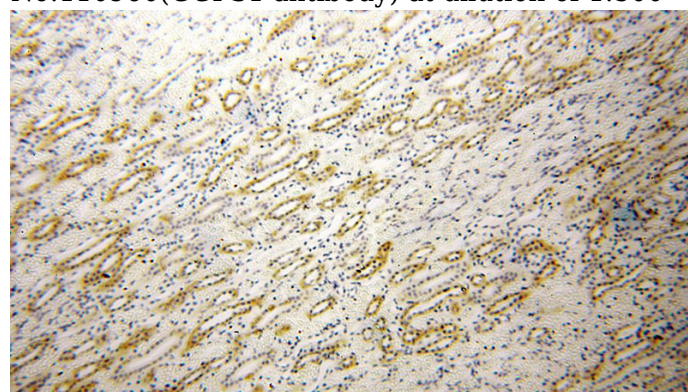
Ig Type

Rabbit IgG

Applications

ELISA, WB, IHC, IP

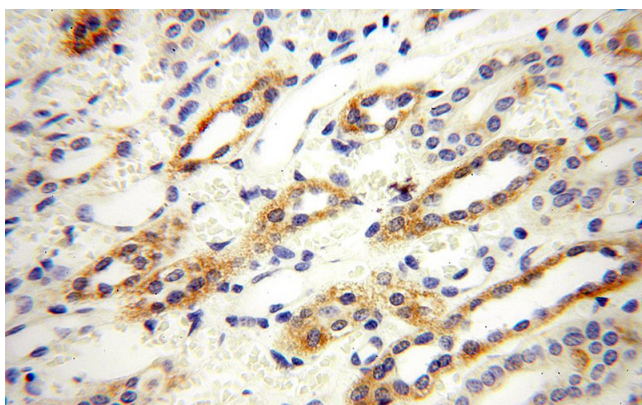
Dilutions



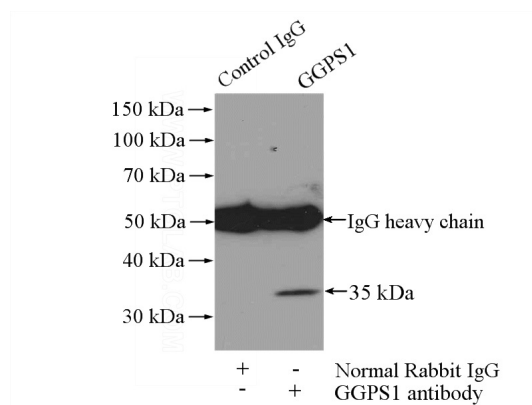
Immunohistochemical of paraffin-embedded human kidney using Catalog No:110960(GGPS1 antibody) at dilution of 1:100 (under 10x lens)

GGPS1 antibody

Catalog Number: 110960



Immunohistochemical of paraffin-embedded human kidney using Catalog No:110960(GGPS1 antibody) at dilution of 1:100 (under 40x lens)



IP Result of anti-GGPS1 (IP:Catalog No:110960, 4ug; Detection:Catalog No:110960 1:500) with mouse brain tissue lysate 2640ug.