

GFM2 antibody



Catalog Number: 110948

Product name

GFM2 antibody

IP: 1:200-1:2000

IF: 1:20-1:200

Specificity

Human, Mouse, Rat; other species not tested.

Antibody description

GFM2 Rabbit Polyclonal antibody. Positive IP detected in HepG2 cells. Positive WB detected in HepG2 cells. Positive IF detected in HepG2 cells. Observed molecular weight by Western-blot: 87 kDa

Preparation

This antibody was obtained by immunization of GFM2 recombinant protein (Accession Number: XM_017009986). Purification method: Antigen affinity purified.

Formulation

PBS with 0.02% sodium azide and 50% glycerol pH 7.3.

Storage

Store at -20°C. DO NOT ALIQUOT

Clonality

Polyclonal

Ig Type

Rabbit IgG

Applications

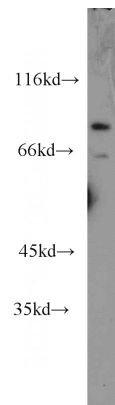
ELISA, WB, IF, IP

Dilutions

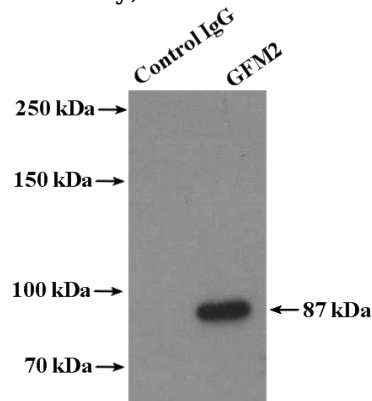
Recommended Dilution:

WB: 1:200-1:2000

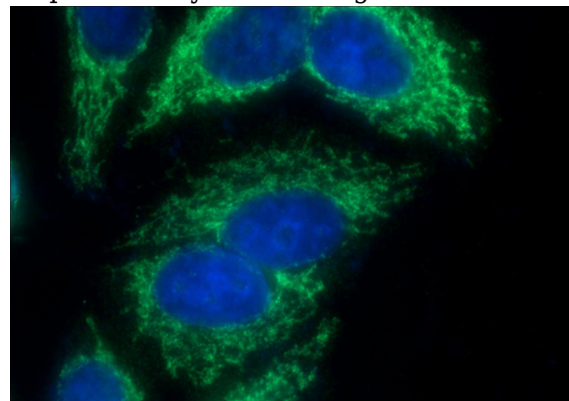
Validations



HepG2 cells were subjected to SDS PAGE followed by western blot with Catalog No:110948(GFM2 antibody) at dilution of 1:1000



IP Result of anti-GFM2 (IP:Catalog No:110948, 4ug; Detection:Catalog No:110948 1:500) with HepG2 cells lysate 3200ug.



Immunofluorescent analysis of (-20oc Ethanol) fixed HepG2 cells using Catalog No:110948(GFM2

GFM2 antibody



Catalog Number: 110948

Antibody) at dilution of 1:100 and Alexa Fluor 488- conjugated AffiniPure Goat Anti-Rabbit IgG(H+L)