

# GDPD5 antibody

Catalog Number: 110930

## Product name

GDPD5 antibody

## Specificity

Human, Mouse, Rat; other species not tested.

## Antibody description

GDPD5 Rabbit Polyclonal antibody. Positive IP detected in mouse skeletal muscle tissue. Positive IHC detected in human spleen tissue, human kidney tissue, human ovary tissue, human placenta tissue. Observed molecular weight by Western-blot: 52 kDa

## Preparation

This antibody was obtained by immunization of GDPD5 recombinant protein (Accession Number: BC020203). Purification method: Antigen affinity purified.

## Formulation

PBS with 0.02% sodium azide and 50% glycerol pH 7.3.

## Storage

Store at -20°C. DO NOT ALIQUOT

## Clonality

Polyclonal

## Ig Type

Rabbit IgG

## Applications

ELISA, IHC, IP

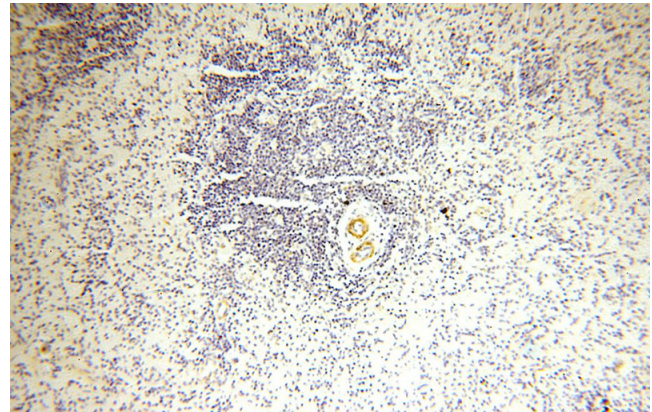
## Dilutions

Recommended Dilution:

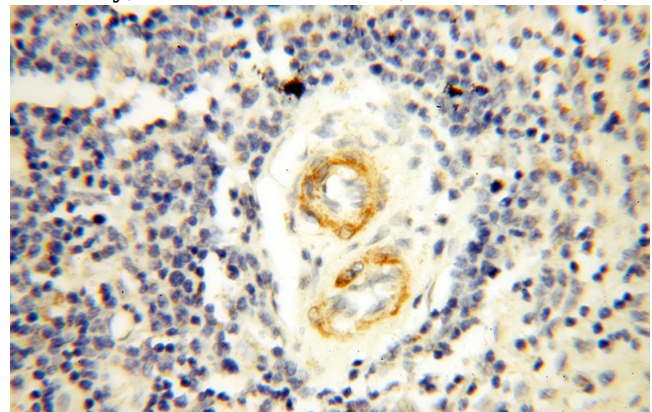
IP: 1:200-1:2000

IHC: 1:20-1:200

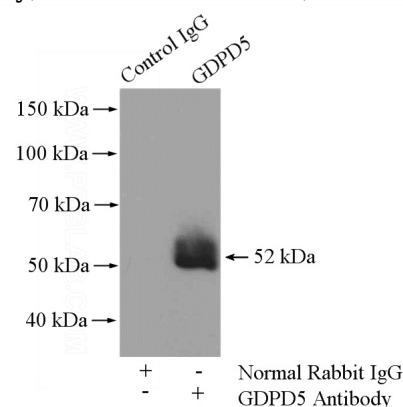
## Validations



Immunohistochemical of paraffin-embedded human spleen using Catalog No:110930(GDPD5 antibody) at dilution of 1:50 (under 10x lens)



Immunohistochemical of paraffin-embedded human spleen using Catalog No:110930(GDPD5 antibody) at dilution of 1:50 (under 40x lens)



IP Result of anti-GDPD5 (IP:Catalog No:110930, 4ug; Detection:Catalog No:110930 1:500) with mouse skeletal muscle tissue lysate 3600ug.