

GDI1 antibody

Catalog Number: 110925

Product name

GDI1 antibody

WB: 1:500-1:5000

IP: 1:200-1:2000

Specificity

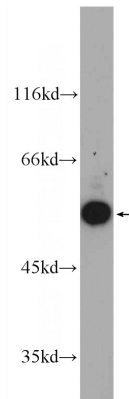
Human, Mouse, Rat; other species not tested.

IHC: 1:20-1:200

Antibody description

GDI1 Rabbit Polyclonal antibody. Positive IP detected in mouse brain tissue. Positive WB detected in mouse brain tissue, human brain tissue. Positive IHC detected in human brain tissue, human kidney tissue, human spleen tissue, human testis tissue. Observed molecular weight by Western-blot: 55 kDa

Validations



Preparation

This antibody was obtained by immunization of GDI1 recombinant protein (Accession Number: NM_001493). Purification method: Antigen affinity purified.

mouse brain tissue were subjected to SDS PAGE followed by western blot with Catalog No:110925(GDI1 Antibody) at dilution of 1:1000

Formulation

PBS with 0.1% sodium azide and 50% glycerol pH 7.3.

Storage

Store at -20°C. DO NOT ALIQUOT

Clonality

Polyclonal

Ig Type

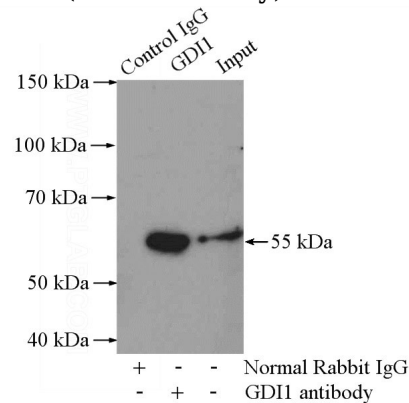
Rabbit IgG

Applications

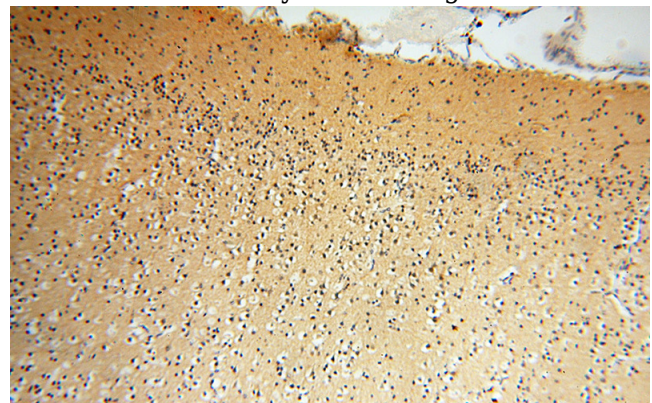
ELISA, IHC, WB, IP

Dilutions

Recommended Dilution:



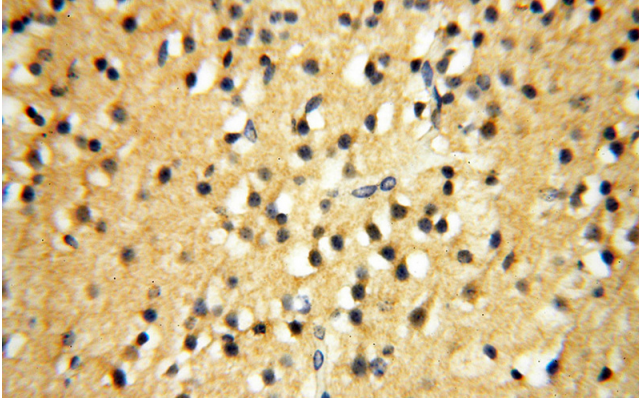
IP Result of anti-GDI1 (IP:Catalog No:110925, 4ug; Detection:Catalog No:110925 1:800) with mouse brain tissue lysate 4000ug.



GDI1 antibody

Catalog Number: 110925

Immunohistochemical of paraffin-embedded human brain using Catalog No:110925(GDI1 antibody) at dilution of 1:50 (under 10x lens)



Immunohistochemical of paraffin-embedded human brain using Catalog No:110925(GDI1 antibody) at dilution of 1:50 (under 40x lens)