

GCSH antibody



Catalog Number: 110918

Product name

GCSH antibody

Specificity

Human, Mouse, Rat; other species not tested.

Antibody description

GCSH Rabbit Polyclonal antibody. Positive IF detected in MCF-7 cells, HepG2 cells. Positive IHC detected in human kidney tissue, human brain tissue, human heart tissue, human liver tissue, human lung tissue, human ovary tissue, human placenta tissue, human skin tissue, human spleen tissue, human testis tissue, rat ovary tissue. Positive WB detected in HEK-293 cells, HeLa cells, human liver tissue, mouse brain tissue, mouse kidney tissue. Positive IP detected in mouse kidney tissue. Observed molecular weight by Western-blot: 15 kDa

Preparation

This antibody was obtained by immunization of GCSH recombinant protein (Accession Number: NM_004483). Purification method: Antigen affinity purified.

Formulation

PBS with 0.02% sodium azide and 50% glycerol pH 7.3.

Storage

Store at -20°C. DO NOT ALIQUOT

Clonality

Polyclonal

Ig Type

Rabbit IgG

Applications

ELISA, WB, IHC, IF, IP

Dilutions

Recommended Dilution:

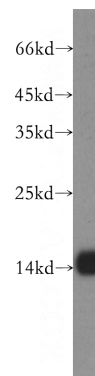
WB: 1:500-1:5000

IP: 1:500-1:5000

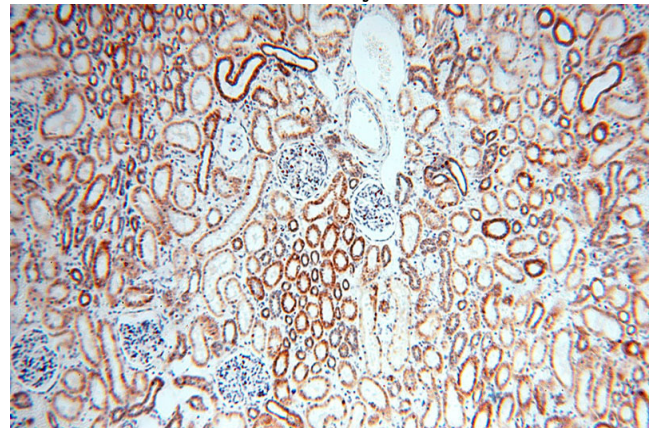
IHC: 1:20-1:200

IF: 1:10-1:100

Validations



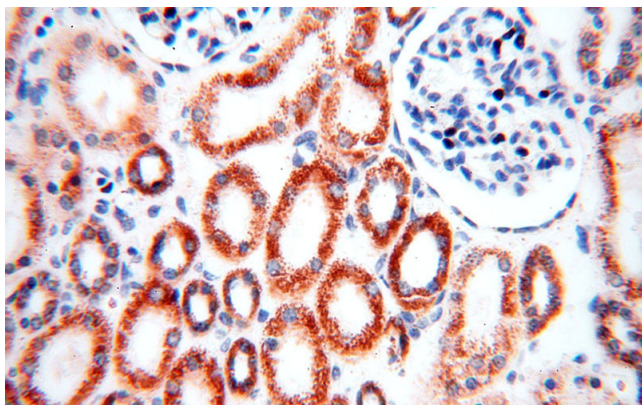
HEK-293 cells were subjected to SDS PAGE followed by western blot with Catalog No:110918(GCSH antibody) at dilution of 1:500



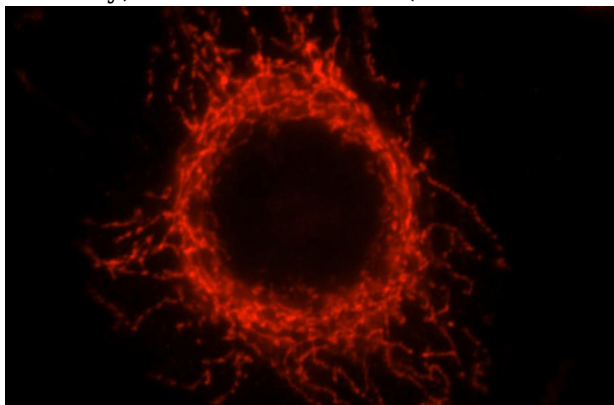
Immunohistochemical of paraffin-embedded human kidney using Catalog No:110918(GCSH antibody) at dilution of 1:100 (under 10x lens)

GCSH antibody

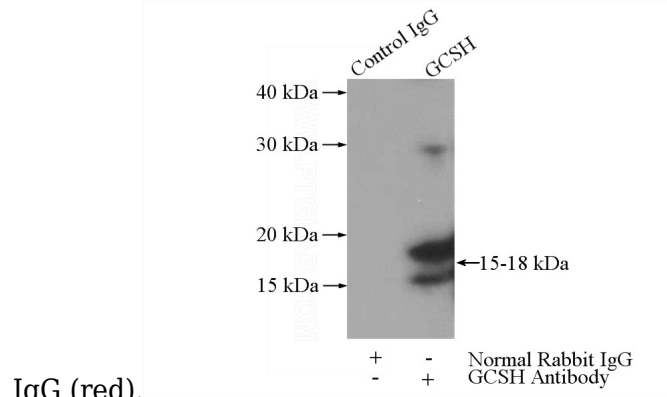
Catalog Number: 110918



Immunohistochemical of paraffin-embedded human kidney using Catalog No:110918(GCSH antibody) at dilution of 1:100 (under 40x lens)



Immunofluorescent analysis of MCF-7 cells, using GCSH antibody Catalog No:110918 at 1:25 dilution and Rhodamine-labeled goat anti-rabbit



IgG (red).

IP Result of anti-GCSH (IP:Catalog No:110918, 3ug; Detection:Catalog No:110918 1:1000) with mouse kidney tissue lysate 4000ug.