

# GCS1 antibody

Catalog Number: 110915

## Product name

GCS1 antibody

## Specificity

Human, Mouse, Rat; other species not tested.

## Antibody description

GCS1 Rabbit Polyclonal antibody. Positive IHC detected in human small intestine tissue, human liver tissue. Positive WB detected in mouse brain tissue, COLO 320 cells. Observed molecular weight by Western-blot: 85-92kd

## Preparation

This antibody was obtained by immunization of GCS1 recombinant protein (Accession Number: NM\_006302). Purification method: Antigen affinity purified.

## Formulation

PBS with 0.02% sodium azide and 50% glycerol pH 7.3.

## Storage

Store at -20°C. DO NOT ALIQUOT

## Clonality

Polyclonal

## Ig Type

Rabbit IgG

## Applications

ELISA, WB, IHC

## Dilutions

Recommended Dilution:

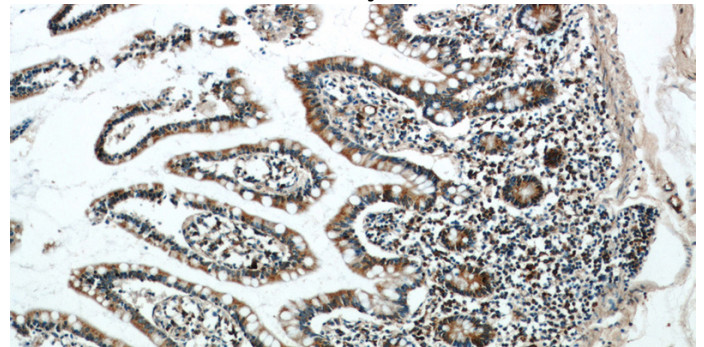
WB: 1:200-1:2000

IHC: 1:20-1:200

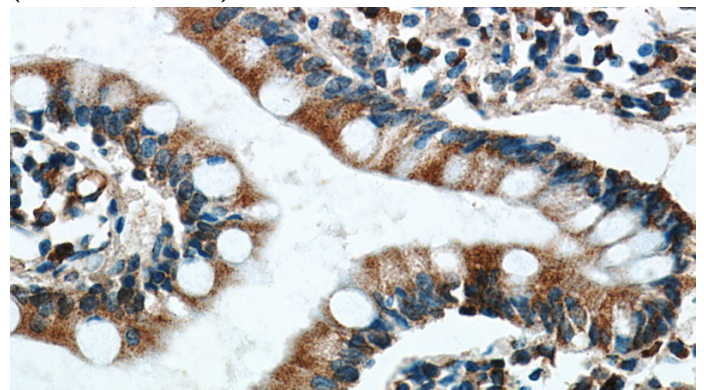
## Validations



mouse brain tissue were subjected to SDS PAGE followed by western blot with Catalog No:110915(MOGS antibody) at dilution of 1:500



Immunohistochemical of paraffin-embedded human small intestine using Catalog No:110915(MOGS antibody) at dilution of 1:100 (under 10x lens)



Immunohistochemical of paraffin-embedded human small intestine using Catalog No:110915(MOGS antibody) at dilution of 1:100 (under 40x lens)