

# GCLC antibody

Catalog Number: 110906

## Product name

GCLC antibody

IP: 1:200-1:2000

IHC: 1:20-1:200

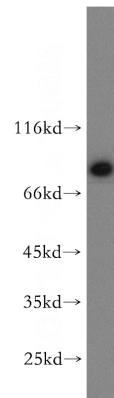
## Specificity

Human, Mouse, Rat; other species not tested.

## Validations

## Antibody description

GCLC Rabbit Polyclonal antibody. Positive WB detected in Jurkat cells, HEK-293 cells, L02 cells, mouse kidney tissue, mouse lung tissue. Positive IP detected in mouse kidney tissue. Positive IHC detected in human kidney tissue. Observed molecular weight by Western-blot: 73kd



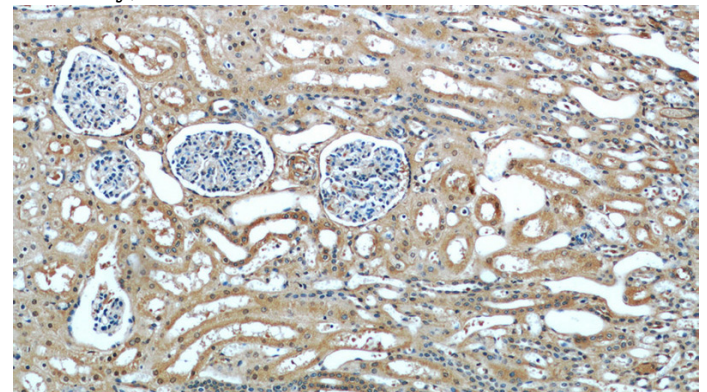
## Preparation

This antibody was obtained by immunization of GCLC recombinant protein (Accession Number: BC022487). Purification method: Antigen affinity purified.

Jurkat cells were subjected to SDS PAGE followed by western blot with Catalog No:110906(GCLC antibody) at dilution of 1:200

## Formulation

PBS with 0.02% sodium azide and 50% glycerol pH 7.3.



## Storage

Store at -20°C. DO NOT ALIQUOT

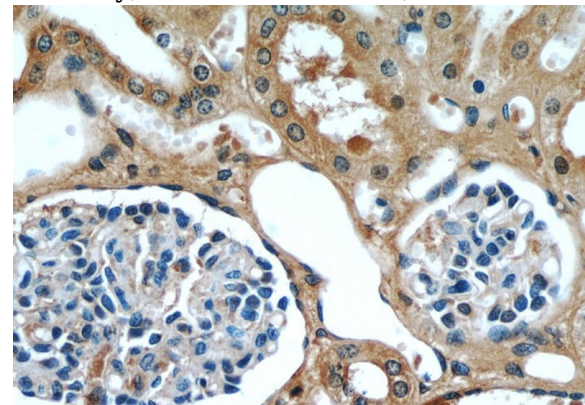
## Clonality

Polyclonal

Immunohistochemical of paraffin-embedded human kidney using Catalog No:110906(GCLC antibody) at dilution of 1:50 (under 10x lens)

## Ig Type

Rabbit IgG



## Applications

ELISA, WB, IHC, IP

## Dilutions

Recommended Dilution:

WB: 1:200-1:2000

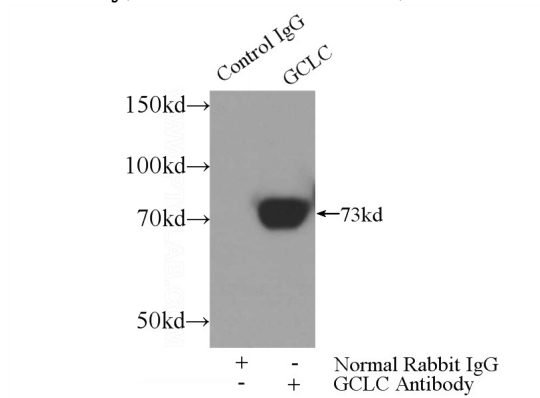
Immunohistochemical of paraffin-embedded human kidney using Catalog No:110906(GCLC antibody) at dilution of 1:50 (under 10x lens)

# GCLC antibody

Catalog Number: 110906

---

antibody) at dilution of 1:50 (under 40x lens)



IP Result of anti-GCLC (IP:Catalog No:110906, 3ug; Detection:Catalog No:110906 1:500) with mouse kidney tissue lysate 4000ug.