

# GCC1 antibody



Catalog Number: 110899

## Product name

GCC1 antibody

## Immunogen

[Human GCC1 Recombinant protein \(GST tag\)](#)

## Specificity

Human, Mouse, Rat; other species not tested.

## Antibody description

GCC1 Rabbit Polyclonal antibody. Positive WB detected in HeLa cells, mouse ovary tissue. Positive IF detected in A431 cells. Observed molecular weight by Western-blot: 105kd

## Preparation

This antibody was obtained by immunization of GCC1 recombinant protein (Accession Number: NM\_024523). Purification method: Antigen affinity purified.

## Formulation

PBS with 0.02% sodium azide and 50% glycerol pH 7.3.

## Storage

Store at -20°C. DO NOT ALIQUOT

## Clonality

Polyclonal

## Ig Type

Rabbit IgG

## Applications

ELISA, IF, WB

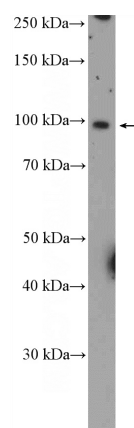
## Dilutions

Recommended Dilution:

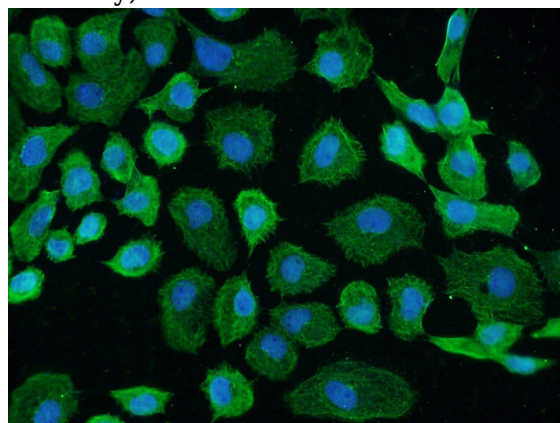
WB: 1:1000-1:10000

IF: 1:10-1:100

## Validations



HeLa cells were subjected to SDS PAGE followed by western blot with Catalog No:110899(GCC1 Antibody) at dilution of 1:2000



Immunofluorescent analysis of A431 cells using Catalog No:110899(GCC1 Antibody) at dilution of 1:25 and Alexa Fluor 488-conjugated AffiniPure Goat Anti-Rabbit IgG(H+L)