

GBP1 antibody

Catalog Number: 110891

Product name

GBP1 antibody

WB: 1:500-1:5000

IP: 1:200-1:2000

Specificity

Human; other species not tested.

IHC: 1:20-1:200

IF: 1:10-1:100

Antibody description

GBP1 Rabbit Polyclonal antibody. Positive IP detected in human placenta tissue. Positive WB detected in HUVEC cells, human brain tissue, human placenta tissue. Positive IF detected in MCF-7 cells. Positive IHC detected in human endometrial cancer tissue. Observed molecular weight by Western-blot: 67 kDa

Preparation

This antibody was obtained by immunization of GBP1 recombinant protein (Accession Number: NM_002053). Purification method: Antigen affinity purified.

Formulation

PBS with 0.02% sodium azide and 50% glycerol pH 7.3.

Storage

Store at -20°C. DO NOT ALIQUOT

Clonality

Polyclonal

Ig Type

Rabbit IgG

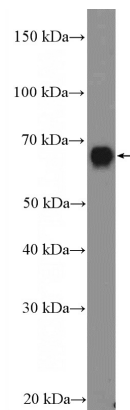
Applications

ELISA, IHC, IF, IP, WB

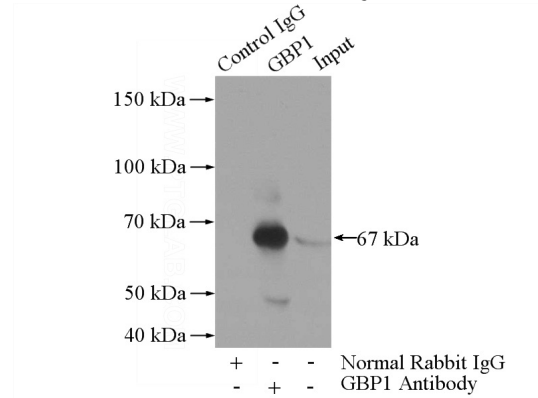
Dilutions

Recommended Dilution:

Validations



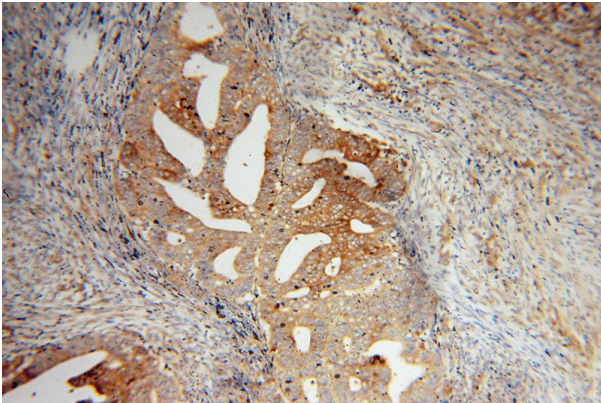
HUVEC cells were subjected to SDS PAGE followed by western blot with Catalog No:110891(GBP1 Antibody) at dilution of 1:1500



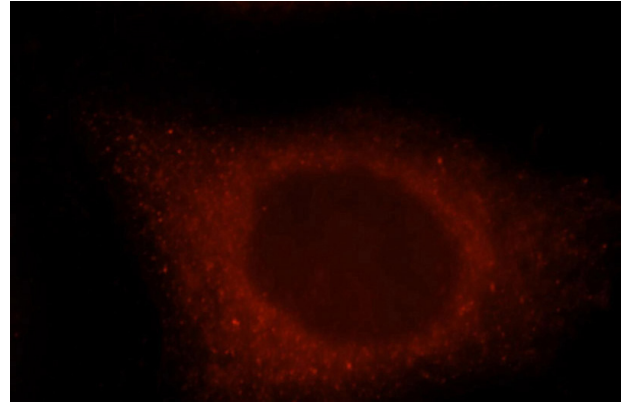
IP Result of anti-GBP1 (IP:Catalog No:110891, 4ug; Detection:Catalog No:110891 1:600) with human placenta tissue lysate 4000ug.

GBP1 antibody

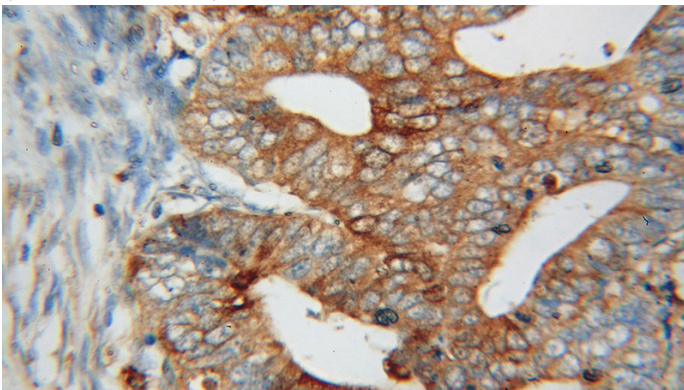
Catalog Number: 110891



Immunohistochemical of paraffin-embedded human endometrial cancer using Catalog No:110891(GBP1 antibody) at dilution of 1:50 (under 40x lens)



Immunohistochemical of paraffin-embedded human endometrial cancer using Catalog No:110891(GBP1 antibody) at dilution of 1:50 (under 10x lens)



Immunofluorescent analysis of MCF-7 cells, using GBP1 antibody Catalog No:110891 at 1:25 dilution and Rhodamine-labeled goat anti-rabbit IgG (red).