

# GAS2 antibody

Catalog Number: 110870

## Product name

GAS2 antibody

## Specificity

Human, Mouse, Rat; other species not tested.

## Antibody description

GAS2 Rabbit Polyclonal antibody. Positive WB detected in human kidney tissue, human liver tissue. Positive IHC detected in human lung cancer tissue. Observed molecular weight by Western-blot: 35 kDa

## Preparation

This antibody was obtained by immunization of GAS2 recombinant protein (Accession Number: NM\_001391935). Purification method: Antigen affinity purified.

## Formulation

PBS with 0.1% sodium azide and 50% glycerol pH 7.3.

## Storage

Store at -20°C. DO NOT ALIQUOT

## Clonality

Polyclonal

## Ig Type

Rabbit IgG

## Applications

ELISA, WB, IHC

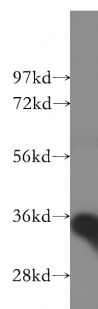
## Dilutions

Recommended Dilution:

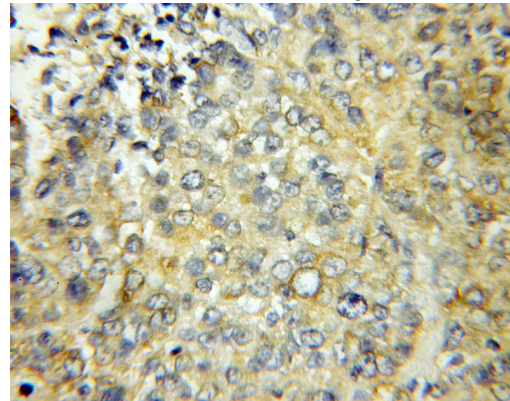
WB: 1:500-1:5000

IHC: 1:20-1:200

## Validations



human kidney tissue were subjected to SDS PAGE followed by western blot with Catalog No:110870(GAS2 antibody) at dilution of 1:500



Immunohistochemical of paraffin-embedded human lung cancer using Catalog No:110870(GAS2 antibody) at dilution of 1:50 (under 10x lens)