

Gamma adaptin antibody



Catalog Number: 110855

Product name

Gamma adaptin antibody

Specificity

Human, Mouse, Rat; other species not tested.

Antibody description

Gamma adaptin Rabbit Polyclonal antibody. Positive WB detected in HEK-293 cells, mouse skeletal muscle tissue. Positive IHC detected in human pancreas cancer tissue. Observed molecular weight by Western-blot: 91 kDa

Preparation

This antibody was obtained by immunization of Gamma adaptin recombinant protein (Accession Number: NM_001030007). Purification method: Antigen affinity purified.

Formulation

PBS with 0.02% sodium azide and 50% glycerol pH 7.3.

Storage

Store at -20°C. DO NOT ALIQUOT

Clonality

Polyclonal

Ig Type

Rabbit IgG

Applications

ELISA, WB, IHC

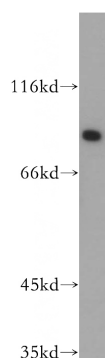
Dilutions

Recommended Dilution:

WB: 1:500-1:5000

IHC: 1:20-1:200

Validations



HEK-293 cells were subjected to SDS PAGE followed by western blot with Catalog No:110855(AP1G1 antibody) at dilution of 1:400

Immunohistochemistry of paraffin-embedded human pancreas cancer tissue slide using Catalog No:110855(Gamma adaptin Antibody) at dilution of 1:50 (under 40x lens)