

# GALNTL2 antibody



Catalog Number: 110850

## Product name

GALNTL2 antibody

WB: 1:200-1:2000

IHC: 1:20-1:200

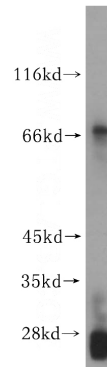
## Specificity

Human; other species not tested.

## Validations

## Antibody description

GALNTL2 Rabbit Polyclonal antibody. Positive IHC detected in human placenta tissue, human brain tissue, human kidney tissue, human lung tissue, human ovary tissue, human testis tissue. Positive WB detected in HEK-293 cells, human liver tissue. Observed molecular weight by Western-blot: 65-70kd



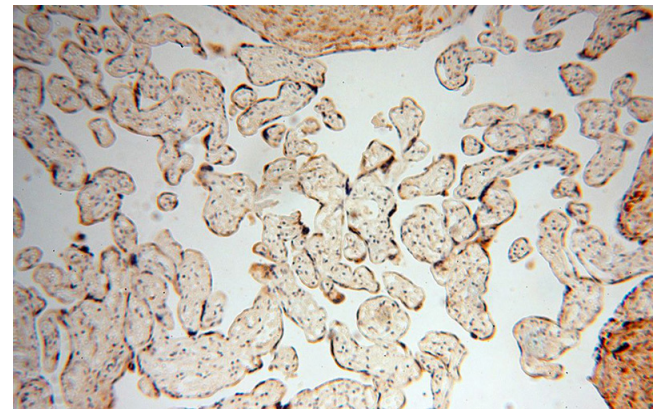
## Preparation

This antibody was obtained by immunization of GALNTL2 recombinant protein (Accession Number: NM\_054110). Purification method: Antigen affinity purified.

HEK-293 cells were subjected to SDS PAGE followed by western blot with Catalog No:110850(GALNTL2 antibody) at dilution of 1:200

## Formulation

PBS with 0.02% sodium azide and 50% glycerol pH 7.3.



## Storage

Store at -20°C. DO NOT ALIQUOT

## Clonality

Polyclonal

Immunohistochemical of paraffin-embedded human placenta using Catalog No:110850(GALNTL2 antibody) at dilution of 1:50 (under 10x lens)

## Ig Type

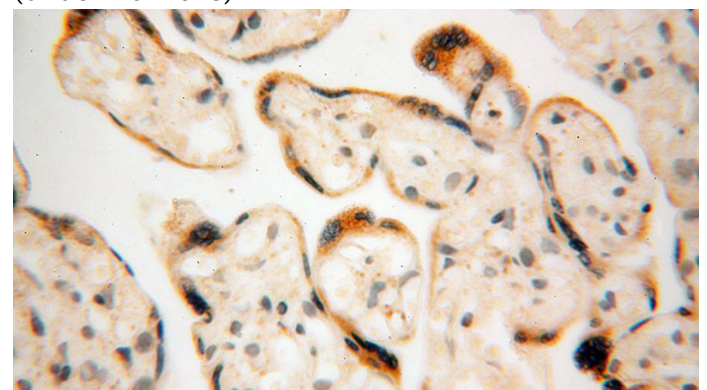
Rabbit IgG

## Applications

ELISA, WB, IHC

## Dilutions

Recommended Dilution:



# GALNTL2 antibody



Catalog Number: 110850

---

Immunohistochemical of paraffin-embedded human placenta using Catalog

No:110850(GALNTL2 antibody) at dilution of 1:50 (under 40x lens)