

## Product name

GALM antibody

## Specificity

Human, Mouse, Rat; other species not tested.

## Antibody description

GALM Rabbit Polyclonal antibody. Positive IHC detected in human heart tissue, human brain tissue, human spleen tissue. Positive WB detected in HeLa cells. Observed molecular weight by Western-blot: 38kd

## Preparation

This antibody was obtained by immunization of GALM recombinant protein (Accession Number: NM\_138801). Purification method: Antigen affinity purified.

## Formulation

PBS with 0.02% sodium azide and 50% glycerol pH 7.3.

## Storage

Store at -20°C. DO NOT ALIQUOT

## Clonality

Polyclonal

## Ig Type

Rabbit IgG

## Applications

ELISA, WB, IHC

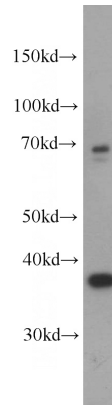
## Dilutions

Recommended Dilution:

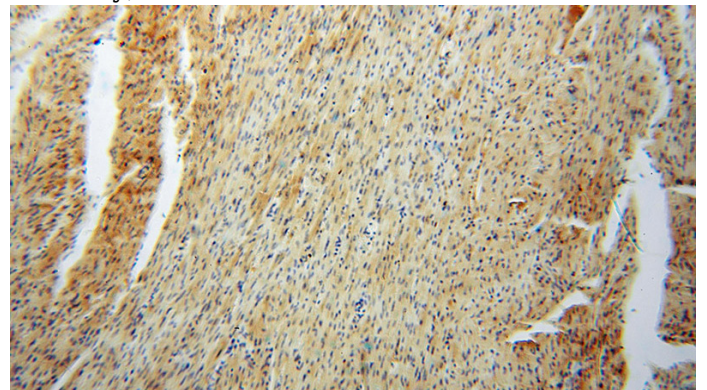
WB: 1:200-1:2000

IHC: 1:20-1:200

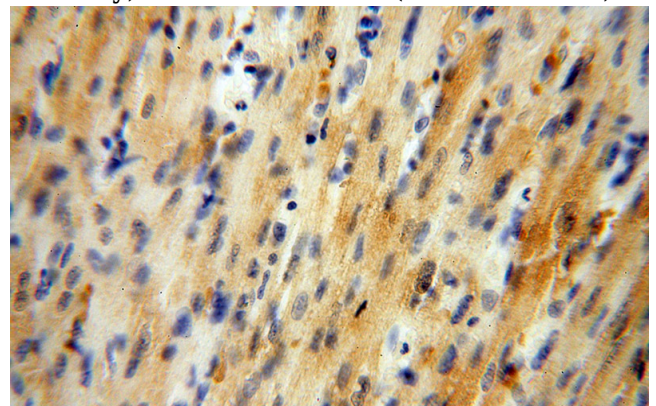
## Validations



HeLa cells were subjected to SDS PAGE followed by western blot with Catalog No:110844(GALM antibody) at dilution of 1:600



Immunohistochemical of paraffin-embedded human heart using Catalog No:110844(GALM antibody) at dilution of 1:50 (under 10x lens)



Immunohistochemical of paraffin-embedded human heart using Catalog No:110844(GALM antibody) at dilution of 1:50 (under 40x lens)