

GABPA antibody

Catalog Number: 110804

Product name

GABPA antibody

Specificity

Human, Mouse, Rat; other species not tested.

Antibody description

GABPA Rabbit Polyclonal antibody. Positive IHC detected in human breast cancer tissue, human cervical cancer tissue. Positive IP detected in HeLa cells. Positive WB detected in K-562 cells, A431 cells, A549 cells, HEK-293 cells, HT-1080 cells, MCF7 cells, mouse liver tissue, NIH/3T3 cells, rat brain tissue. Observed molecular weight by Western-blot: 56-60 kDa

Preparation

This antibody was obtained by immunization of GABPA recombinant protein (Accession Number: XM_047440739). Purification method: Antigen affinity purified.

Formulation

PBS with 0.02% sodium azide and 50% glycerol pH 7.3.

Storage

Store at -20°C. DO NOT ALIQUOT

Clonality

Polyclonal

Ig Type

Rabbit IgG

Applications

ELISA, WB, IHC, IP

Dilutions

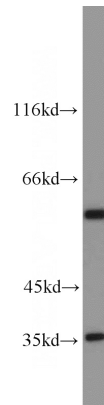
Recommended Dilution:

WB: 1:500-1:5000

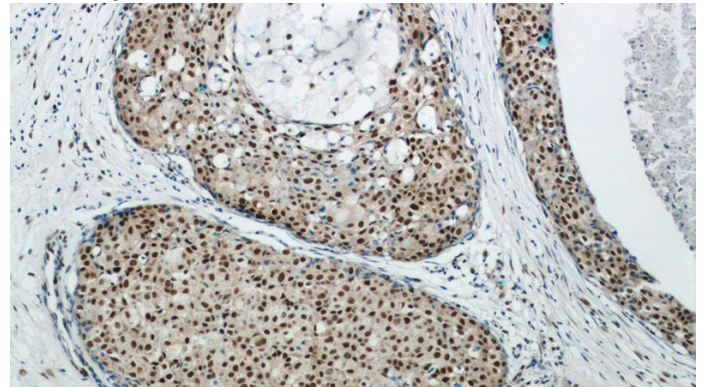
IP: 1:500-1:5000

IHC: 1:20-1:200

Validations



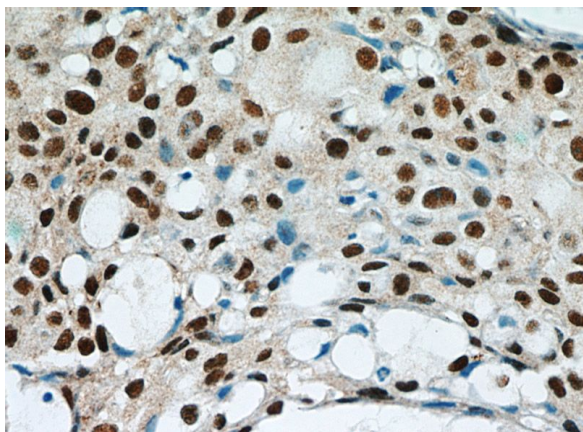
K-562 cells were subjected to SDS PAGE followed by western blot with Catalog No:110804(GABPA antibody) at dilution of 1:1000



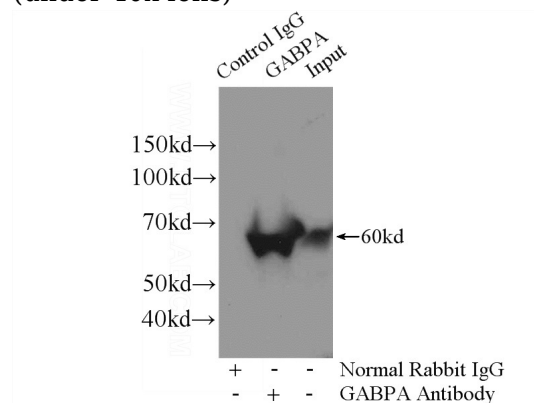
Immunohistochemical of paraffin-embedded human breast cancer using Catalog No:110804(GABPA antibody) at dilution of 1:50 (under 10x lens)

GABPA antibody

Catalog Number: 110804



(under 40x lens)



Immunohistochemical of paraffin-embedded human breast cancer using Catalog No:110804(GABPA antibody) at dilution of 1:50

IP Result of anti-GABPA (IP:Catalog No:110804, 4ug; Detection:Catalog No:110804 1:1000) with HeLa cells lysate 1200ug.