

# GABARAPL2-Specific antibody



Catalog Number: 110802

## Product name

GABARAPL2-Specific antibody

## Specificity

Human, Mouse, Rat; other species not tested.

## Antibody description

GABARAPL2-Specific Rabbit Polyclonal antibody. Positive IHC detected in human heart tissue, human brain tissue. Positive FC detected in HepG2 cells. Positive WB detected in COLO 320 cells, human brain tissue, mouse brain tissue, mouse spleen tissue, PC-3 cells. Observed molecular weight by Western-blot: 14 kDa

## Preparation

This antibody was obtained by immunization of Peptide (Accession Number: NM\_007285). Purification method: Antigen affinity purified.

## Formulation

PBS with 0.02% sodium azide and 50% glycerol pH 7.3.

## Storage

Store at -20°C. DO NOT ALIQUOT

## Clonality

Polyclonal

## Ig Type

Rabbit IgG

## Applications

ELISA, IHC, WB, FC

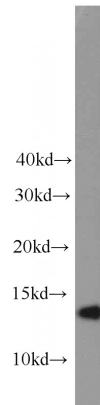
## Dilutions

Recommended Dilution:

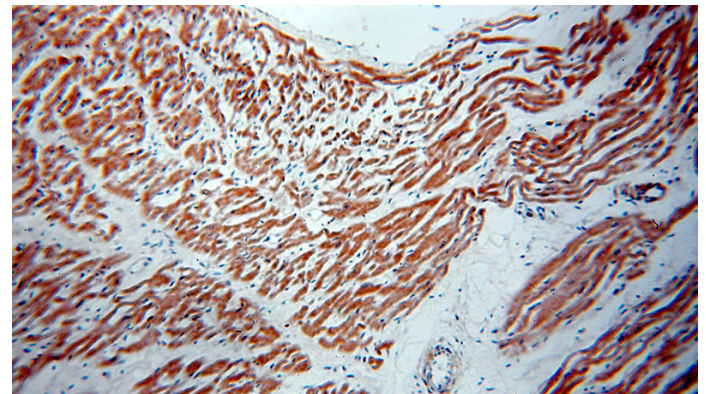
WB: 1:200-1:2000

IHC: 1:20-1:200

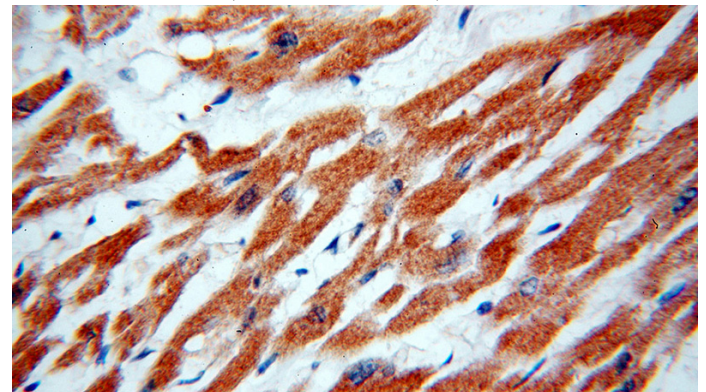
## Validations



COLO 320 cells were subjected to SDS PAGE followed by western blot with Catalog No:110802(GABARAPL2-Specific antibody) at dilution of 1:800



Immunohistochemical of paraffin-embedded human heart using Catalog No:110802(GABARAPL2-Specific antibody) at dilution of 1:50 (under 10x lens)



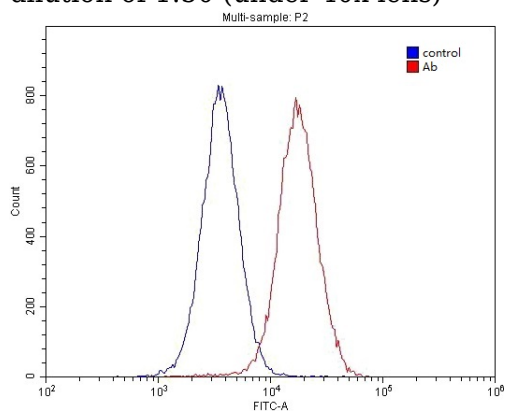
Immunohistochemical of paraffin-embedded human heart using Catalog

# GABARAPL2-Specific antibody



Catalog Number: 110802

No:110802(GABARAPL2-Specific antibody) at dilution of 1:50 (under 40x lens)



1X10<sup>6</sup> HepG2 cells were stained with 0.2ug GABARAPL2-Specific antibody (Catalog No:110802, red) and control antibody (blue). Fixed with 4% PFA blocked with 3% BSA (30 min). Alexa Fluor 488-conjugated AffiniPure Goat Anti-Rabbit IgG(H+L) with dilution 1:1500.