

# FRS2 antibody

Catalog Number: 110777

## Product name

FRS2 antibody

IHC: 1:20-1:200

IF: 1:10-1:100

## Specificity

Human, Mouse, Rat; other species not tested.

## Antibody description

FRS2 Rabbit Polyclonal antibody. Positive IHC detected in human prostate cancer tissue. Positive IF detected in MCF-7 cells. Positive WB detected in MCF-7 cells, human brain tissue, NIH/3T3 cells. Observed molecular weight by Western-blot: 68 kDa

## Preparation

This antibody was obtained by immunization of FRS2 recombinant protein (Accession Number: NM\_006654). Purification method: Antigen affinity purified.

## Formulation

PBS with 0.1% sodium azide and 50% glycerol pH 7.3.

## Storage

Store at -20°C. DO NOT ALIQUOT

## Clonality

Polyclonal

## Ig Type

Rabbit IgG

## Applications

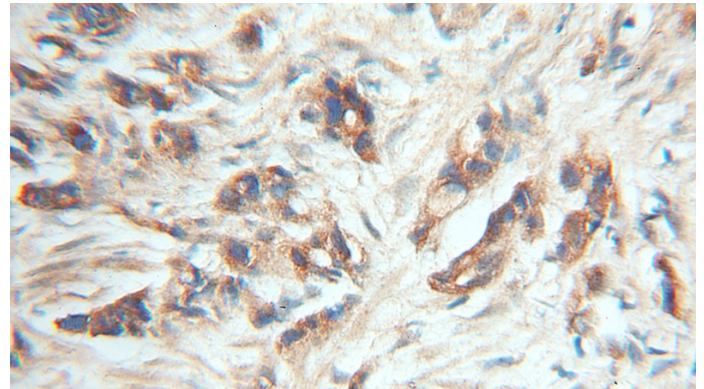
ELISA, IHC, WB, IF

## Dilutions

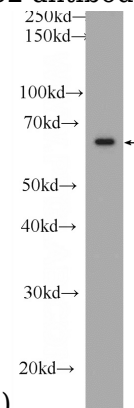
Recommended Dilution:

WB: 1:500-1:5000

## Validations

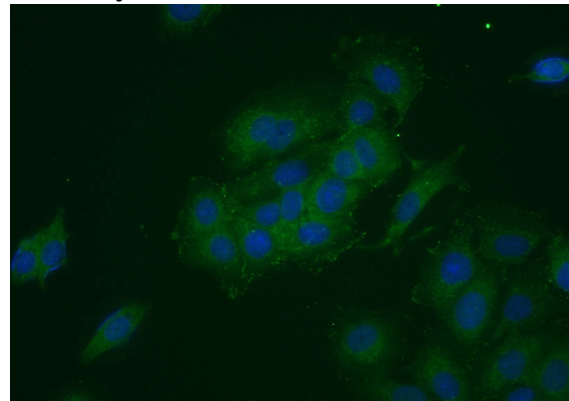


Immunohistochemical of paraffin-embedded human prostate cancer using Catalog No:110777(FRS2 antibody) at dilution of 1:50



(under 10x lens)

MCF-7 cells were subjected to SDS PAGE followed by western blot with Catalog No:110777(FRS2 Antibody) at dilution of 1:1000



Immunofluorescent analysis of MCF-7 cells using Catalog No:110777(FRS2 Antibody) at dilution of

# FRS2 antibody



Catalog Number: 110777

---

1:25 and Alexa Fluor 488-conjugated AffiniPure

Goat Anti-Rabbit IgG(H+L)