

# GABARAPL1 antibody



Catalog Number: 110771

## Product name

GABARAPL1 antibody

IHC: 1:20-1:200

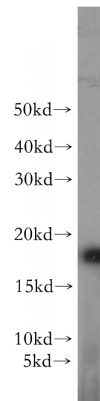
## Specificity

Human, Mouse, Rat; other species not tested.

## Antibody description

GABARAPL1 Rabbit Polyclonal antibody. Positive FC detected in HepG2 cells. Positive IHC detected in human kidney tissue. Positive WB detected in mouse kidney tissue, human heart tissue, human spleen tissue, mouse brain tissue, mouse liver tissue. Observed molecular weight by Western-blot: 17 kDa

## Validations



mouse kidney tissue were subjected to SDS PAGE followed by western blot with Catalog No:110771(GABARAPL1 antibody) at dilution of

## Preparation

This antibody was obtained by immunization of Peptide (Accession Number: NM\_031412). Purification method: Antigen affinity purified.

## Formulation

PBS with 0.02% sodium azide and 50% glycerol pH 7.3.

## Storage

Store at -20°C. DO NOT ALIQUOT

## Clonality

Polyclonal

## Ig Type

Rabbit IgG

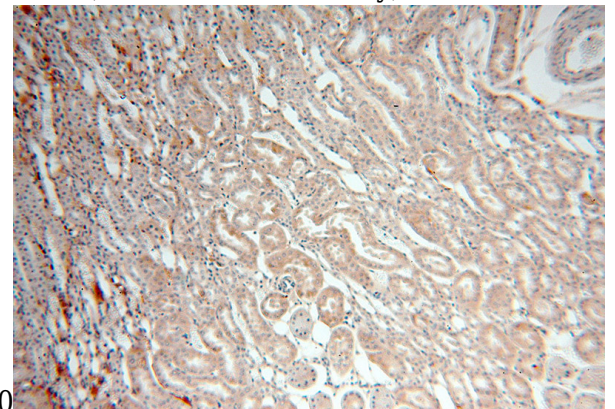
## Applications

ELISA, WB, IHC, FC

## Dilutions

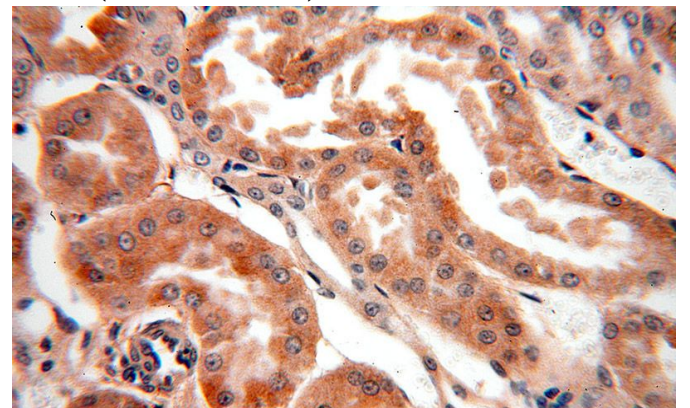
Recommended Dilution:

WB: 1:500-1:5000



1:500

Immunohistochemical of paraffin-embedded human kidney using Catalog No:110771(GABARAPL1 antibody) at dilution of 1:100 (under 10x lens)



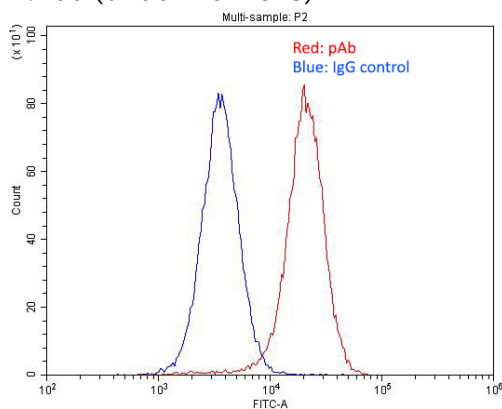
Immunohistochemical of paraffin-embedded human kidney using Catalog

# GABARAPL1 antibody



Catalog Number: 110771

No:110771(GABARAPL1 antibody) at dilution of 1:100 (under 40x lens)



1X10<sup>6</sup> HepG2 cells were stained with 0.2ug GABARAPL1 antibody (Catalog No:110771, red) and control antibody (blue). Fixed with 4% PFA blocked with 3% BSA (30 min). Alexa Fluor 488-conjugated AffiniPure Goat Anti-Rabbit IgG(H+L) with dilution 1:1500.