

# FYTTD1 antibody



Catalog Number: 110759

## Product name

FYTTD1 antibody

Polyclonal

## Ig Type

Rabbit IgG

## Specificity

Human; other species not tested.

## Applications

ELISA, WB

## Antibody description

FYTTD1 Rabbit Polyclonal antibody. Positive WB detected in HeLa cells. Observed molecular weight by Western-blot: 50 kDa

## Dilutions

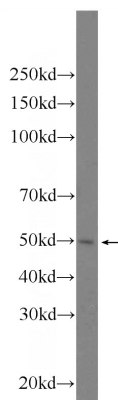
Recommended Dilution:

WB: 1:200-1:1000

## Preparation

This antibody was obtained by immunization of FYTTD1 recombinant protein (Accession Number: NM\_032288). Purification method: Antigen affinity purified.

## Validations



## Formulation

PBS with 0.1% sodium azide and 50% glycerol pH 7.3.

HeLa cells were subjected to SDS PAGE followed by western blot with Catalog No:110759(FYTTD1 Antibody) at dilution of 1:300

## Storage

Store at -20°C. DO NOT ALIQUOT

## Clonality