

# FOXA2 antibody

Catalog Number: 110746

## Product name

FOXA2 antibody

WB: 1:500-1:5000

IP: 1:200-1:1000

## Specificity

Human; other species not tested.

IHC: 1:20-1:200

IF: 1:50-1:500

## Antibody description

FOXA2 Rabbit Polyclonal antibody. Positive IHC detected in human pancreas tissue, human colon cancer tissue, human liver cancer tissue. Positive IF detected in HepG2 cells. Positive WB detected in HepG2 cells, A549 cells, PC-13 cells. Positive IP detected in HepG2 cells. Observed molecular weight by Western-blot: 60 kDa

## Preparation

This antibody was obtained by immunization of FOXA2 recombinant protein (Accession Number: NM\_153675). Purification method: Antigen Affinity purified.

## Formulation

PBS with 0.02% sodium azide and 50% glycerol pH 7.3.

## Storage

Store at -20°C. DO NOT ALIQUOT

## Clonality

Polyclonal

## Ig Type

Rabbit IgG

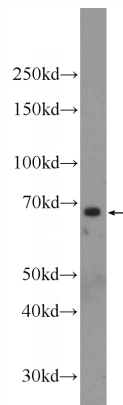
## Applications

ELISA, IP, WB, IHC, IF

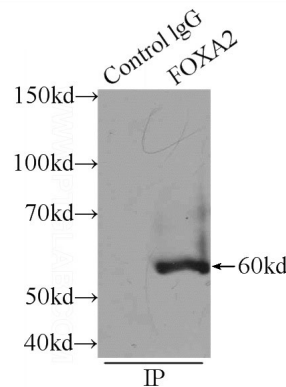
## Dilutions

Recommended Dilution:

## Validations



HepG2 cells were subjected to SDS PAGE followed by western blot with Catalog No:110746(FOXA2 Antibody) at dilution of 1:1000

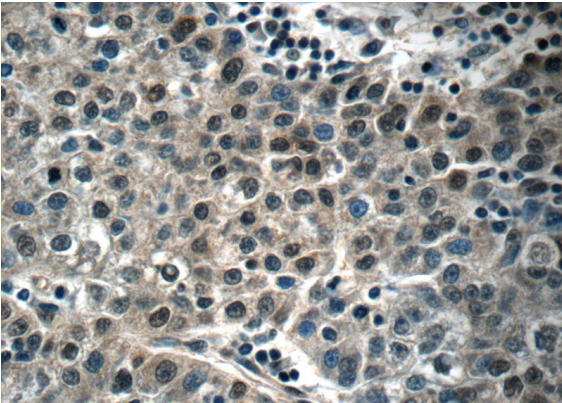


IP Result of anti-FOXA2 (IP:Catalog No:110746, 3ug; Detection:Catalog No:110746 1:300) with HepG2 cells lysate 1920ug.

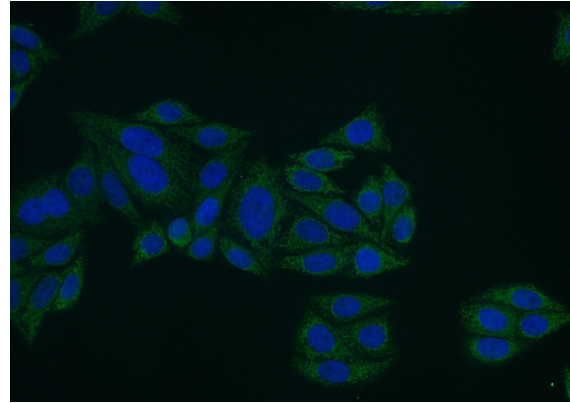
# FOXA2 antibody

Catalog Number: 110746

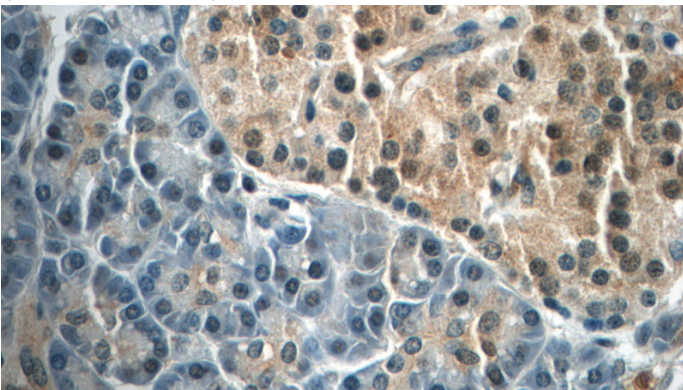
---



Immunohistochemistry of paraffin-embedded human pancreas tissue slide using Catalog No:110746(FOXA2 Antibody) at dilution of 1:50 (under 40x lens)



Immunohistochemistry of paraffin-embedded human liver cancer tissue slide using Catalog No:110746(FOXA2 Antibody) at dilution of 1:50 (under 40x lens)



Immunofluorescent analysis of (-20oc Ethanol) fixed HepG2 cells using Catalog No:110746(FOXA2 Antibody) at dilution of 1:50 and Alexa Fluor 488-conjugated AffiniPure Goat Anti-Rabbit IgG(H+L)