

# FLCN antibody



Catalog Number: 110686

## Product name

FLCN antibody

IP: 1:200-1:1000

IHC: 1:20-1:200

## Specificity

Human, Mouse, Rat; other species not tested.

## Antibody description

FLCN Rabbit Polyclonal antibody. Positive WB detected in mouse thymus tissue, A549 cells, HeLa cells, mouse kidney tissue. Positive IP detected in HeLa cells. Positive IHC detected in human ovary tumor tissue. Observed molecular weight by Western-blot: 38-45 kDa, 64 kDa, 20-26 kDa

## Preparation

This antibody was obtained by immunization of FLCN recombinant protein (Accession Number: NM\_144606). Purification method: Antigen affinity purified.

## Formulation

PBS with 0.1% sodium azide and 50% glycerol pH 7.3.

## Storage

Store at -20°C. DO NOT ALIQUOT

## Clonality

Polyclonal

## Ig Type

Rabbit IgG

## Applications

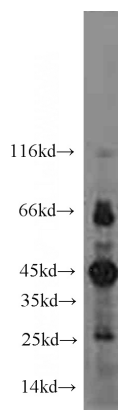
ELISA, WB, IHC, IP

## Dilutions

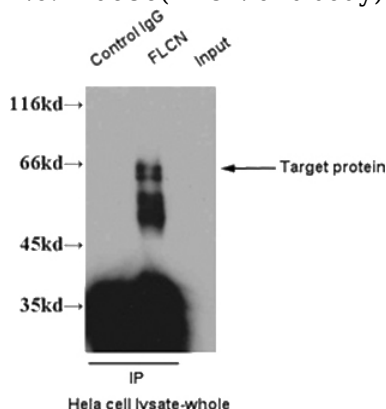
Recommended Dilution:

WB: 1:200-1:1000

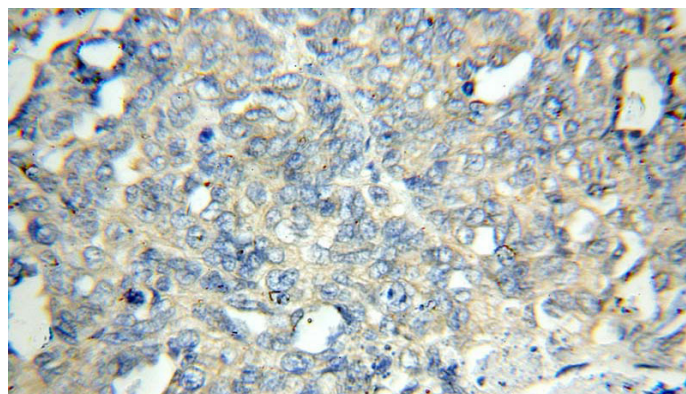
## Validations



mouse thymus tissue were subjected to SDS PAGE followed by western blot with Catalog No:110686(FLCN antibody) at dilution of 1:300



IP result of anti-FLCN(Catalog No:110686) with Hela cell.



Immunohistochemical of paraffin-embedded human ovary tumor using Catalog No:110686(FLCN antibody) at dilution of 1:50

# FLCN antibody



Catalog Number: 110686

---

(under 40x lens)